

Distributed Learning: New Tools for Health Promotion

RHPRC Strategic Planning Session
May 18-19, 2004

Dirk Morrison, Ed.D.
Centre for Distributed Learning
Extension Division, U of S

What is DL?

- Is not just DE
- Is not just the web
- Is integrative regarding technologies
- Is centred around human exchanges
- Is principally a collaborative context

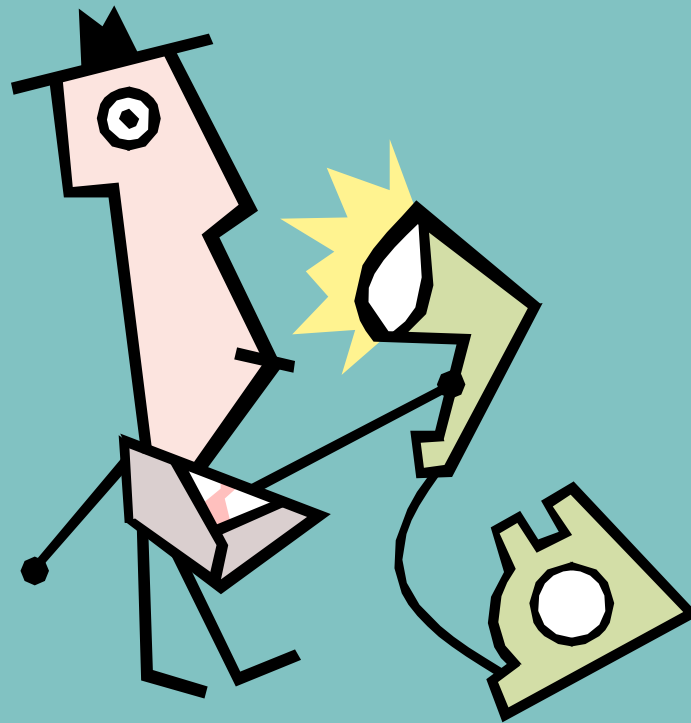
Technologies of DL?



Technologies of DL



Technologies of DL



Technologies of DL



Technologies of DL



Technologies of DL



Technologies of DL



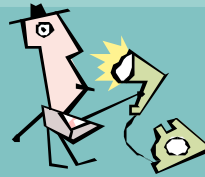
Technologies of DL



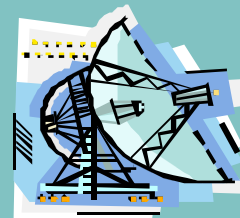
Technologies of DL



Central to DL?



**CONTENT
&
PROCESS**



Contexts for DL?

- Not just higher education
- Workplace learning
- Community-based learning

Workplace DL contexts

- On-the-job, “just-in-time” learning.
 - Improvement of skills, knowledge, attitudes in real-world, real-time contexts.
 - Modular, customizable, self-paced, self-directed, peer-supported, expert resourced.

Community-based DL contexts

- Information
- Education
- Research
- Action

Point of using DL?

- Change or transformation of something...
 - People (knowledge, skills, attitudes)
 - Organizations (practices, processes, policies)
 - Communities (informed engagement & action)

For the purposes of promoting growth, health,
and vitality

Implications for PRHPRC?

- Today's activities...
 - “...establishing the context of how the PRHPRC might contribute to health promotion activities and communities in the future.”
 - Implications for both *scholarship* and *practice* of health promotion

Implications for PRHPRC?

- Scholarly activities...
 - Planning for effective use of DL technologies and processes
 - Forensic analyses regarding utility for participants and/or communities
 - Role of leadership, collaboration, facilitation
 - Analyses of both products and processes

Implications for PRHPRC?

- Practitioner activities...
 - Use DL and associated technologies to expand the number of communities engaged in the process
 - Encourage the development of information access and knowledge creation skills in local participants and communities.

Discussion?

- How do you see DL being used in the future to realize your research and/or practitioner goals regarding Prairie Regional Health Promotion?
- How do you see DL being used by the communities you study and/or serve for the purposes of health promotion?