



Training Services

Information Technology Services | University of Saskatchewan

Mainframe Computing Basics

Changing Your Password

VMS Version

***If you do not know how to connect to a VMS mainframe using telnet you may want to review the Getting Started tutorial before reviewing this tutorial.**

Password Change Restrictions

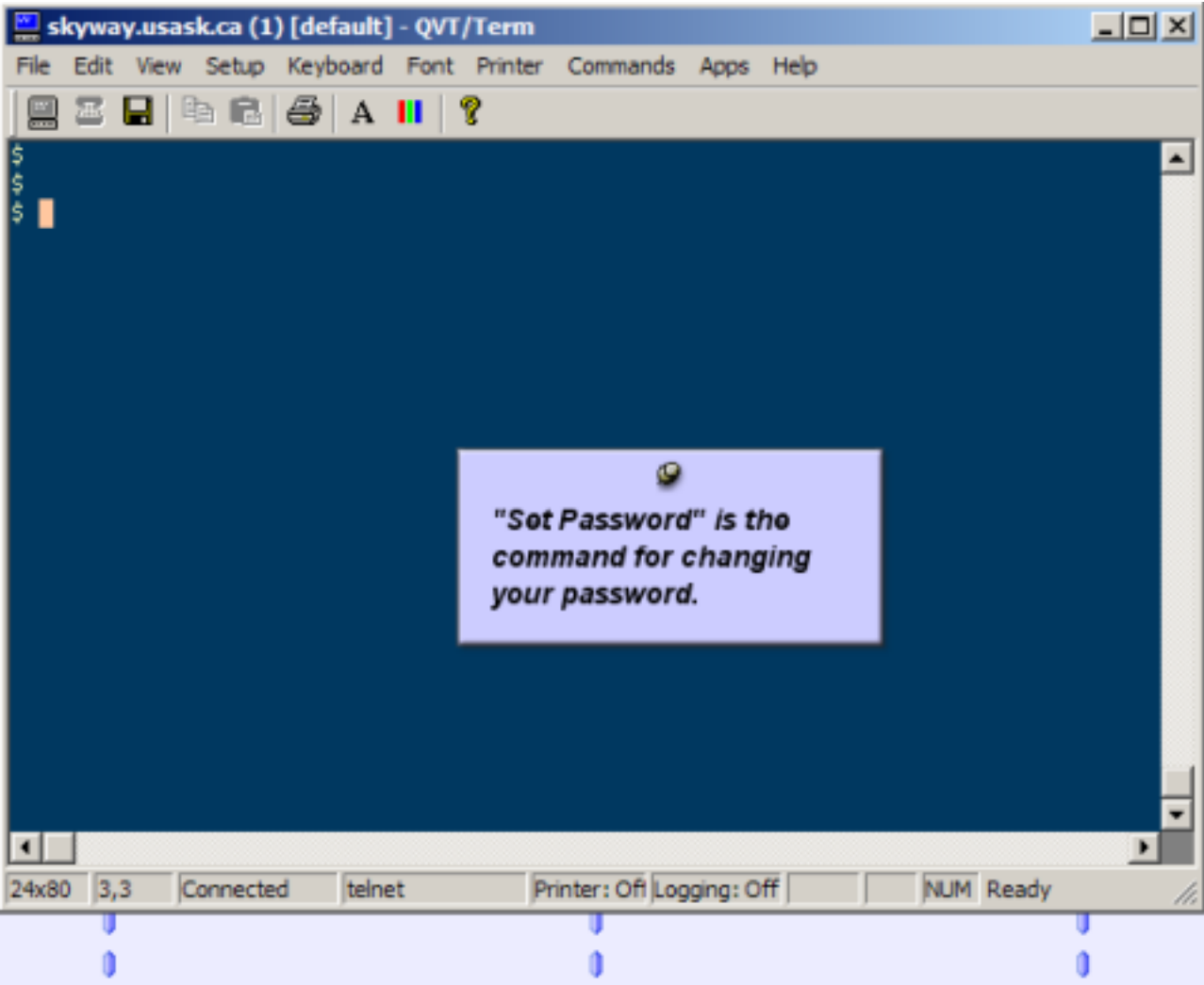
- * There are several rules you must follow when changing your password on the Sask server.
- * The minimum length for a password is 6 characters.
- * The maximum length for your password is 32 characters.
- * Your password can not be an english word, a dictionary is checked when you enter your new password.
- * The password can include letters from a to z.
- * The password can include numbers from 0 to 9.
- * The password can include the following special characters \$ _ - (dollar sign, underscore and

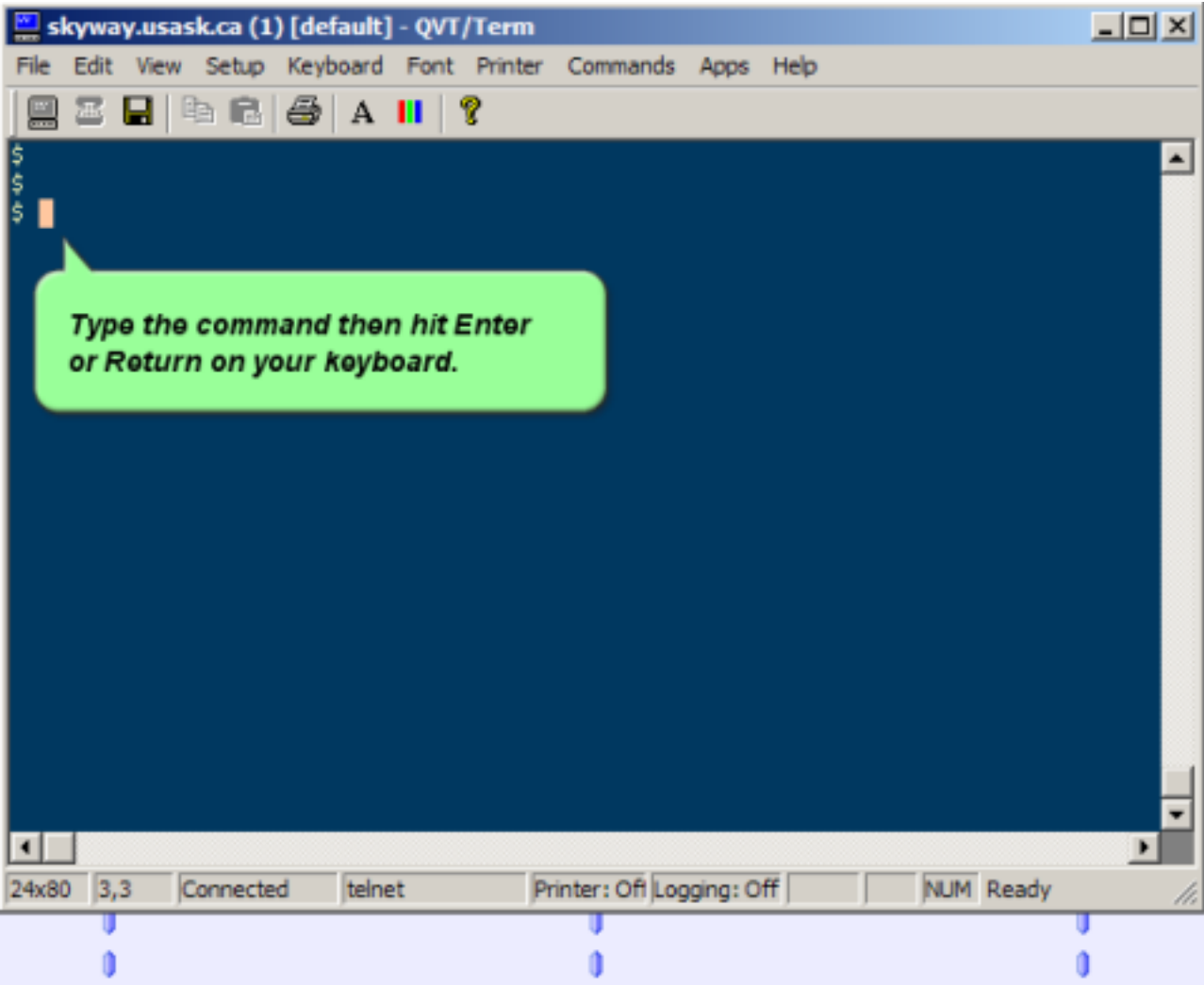
Password Change Restrictions

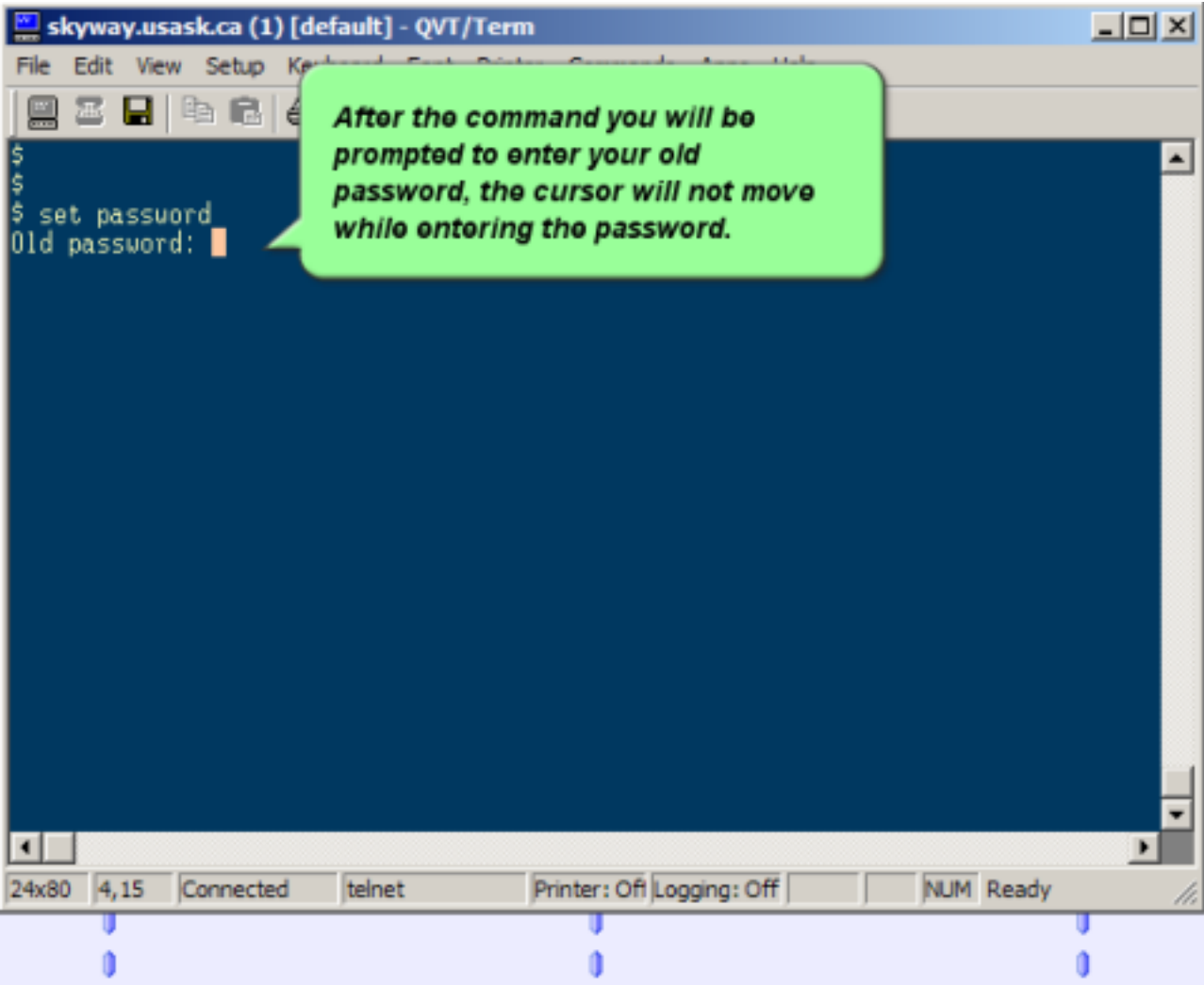
- * The system remembers your last 12 passwords, and you can not reuse any of those last 12 passwords.**
- * Passwords also have a "lifetime" of one year, in which the password can not be reused.**

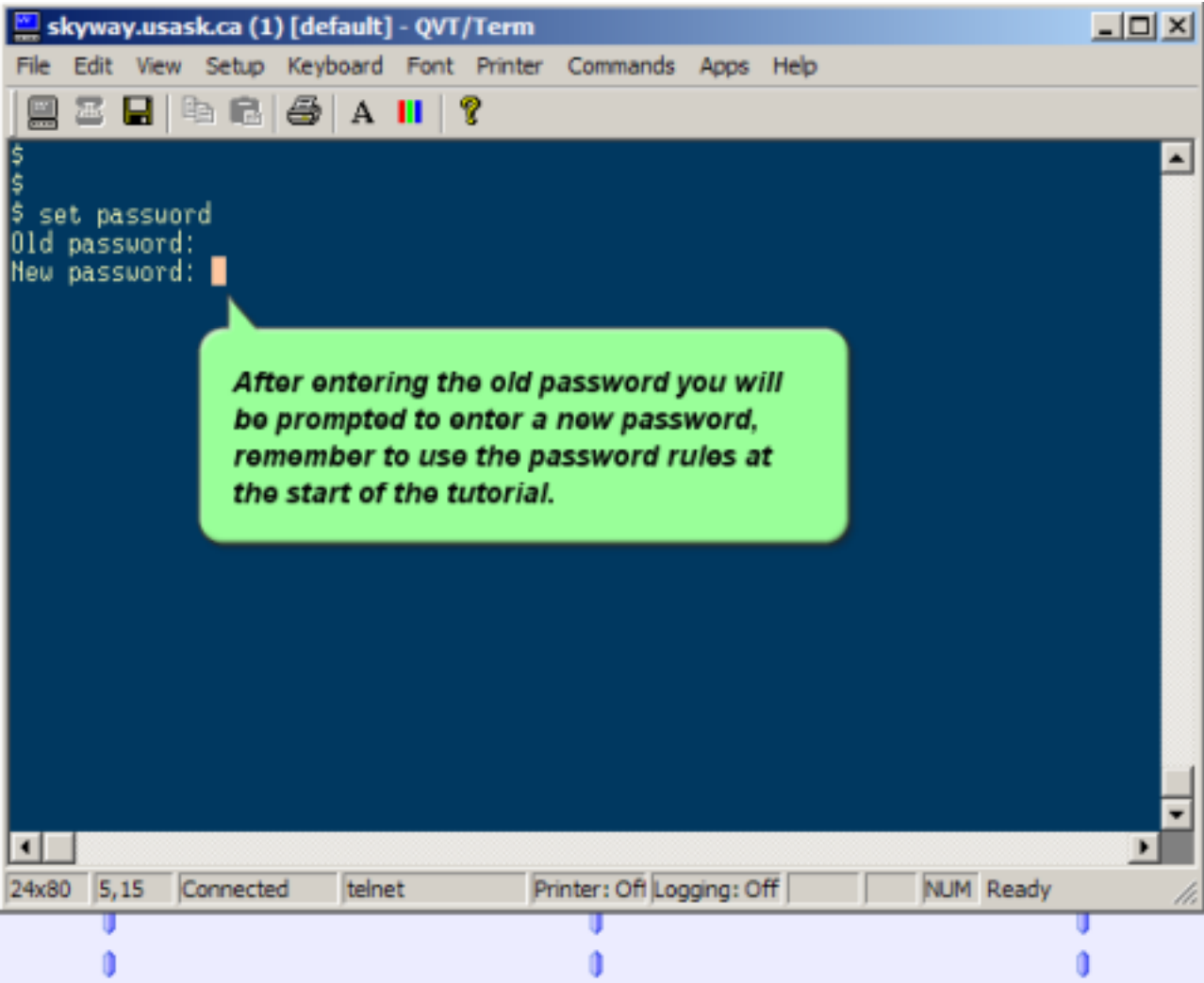
Changing your Password

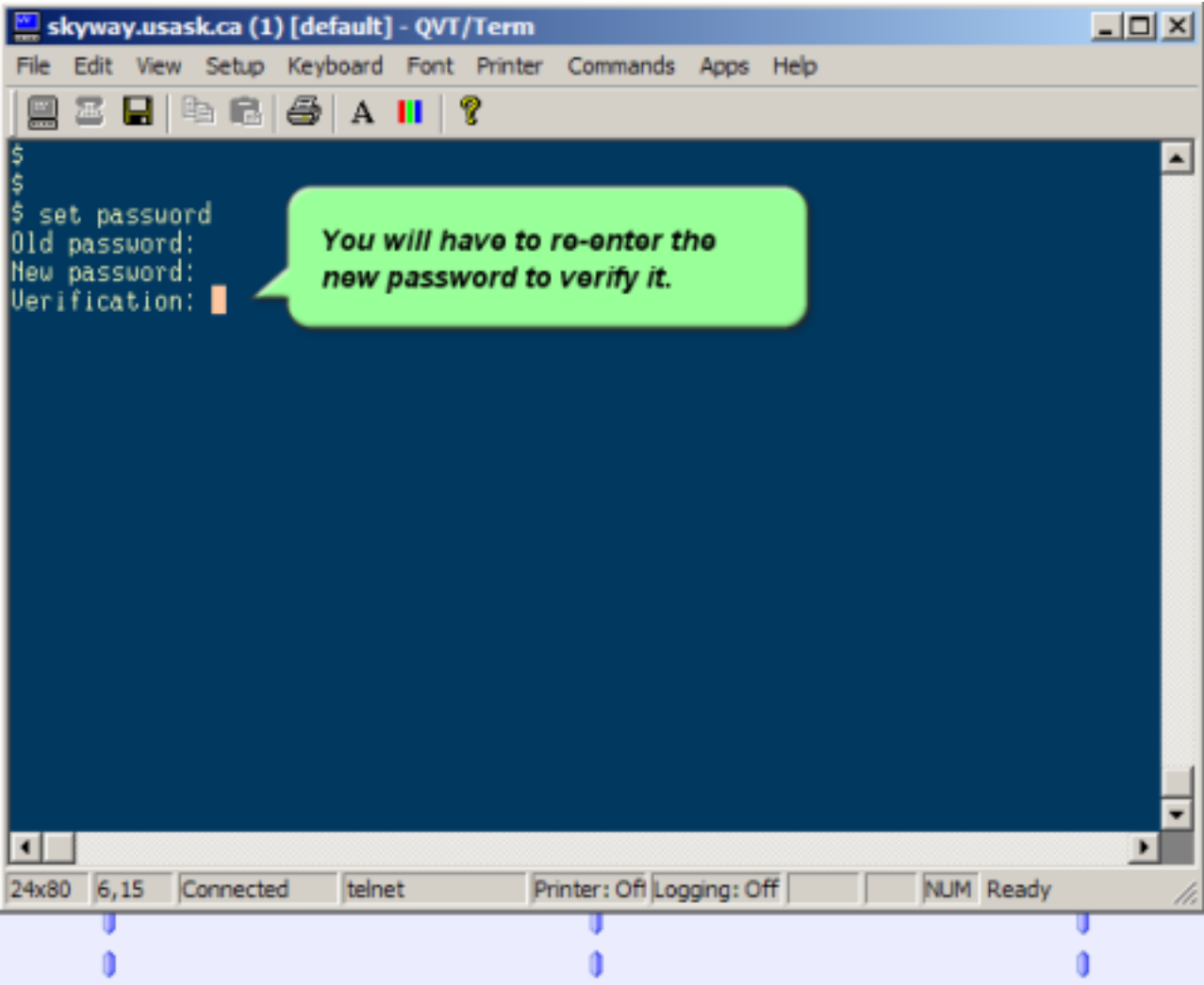
- * The command for changing your password is **"set password"**.
- * The following demonstration will show you the steps for changing your password.

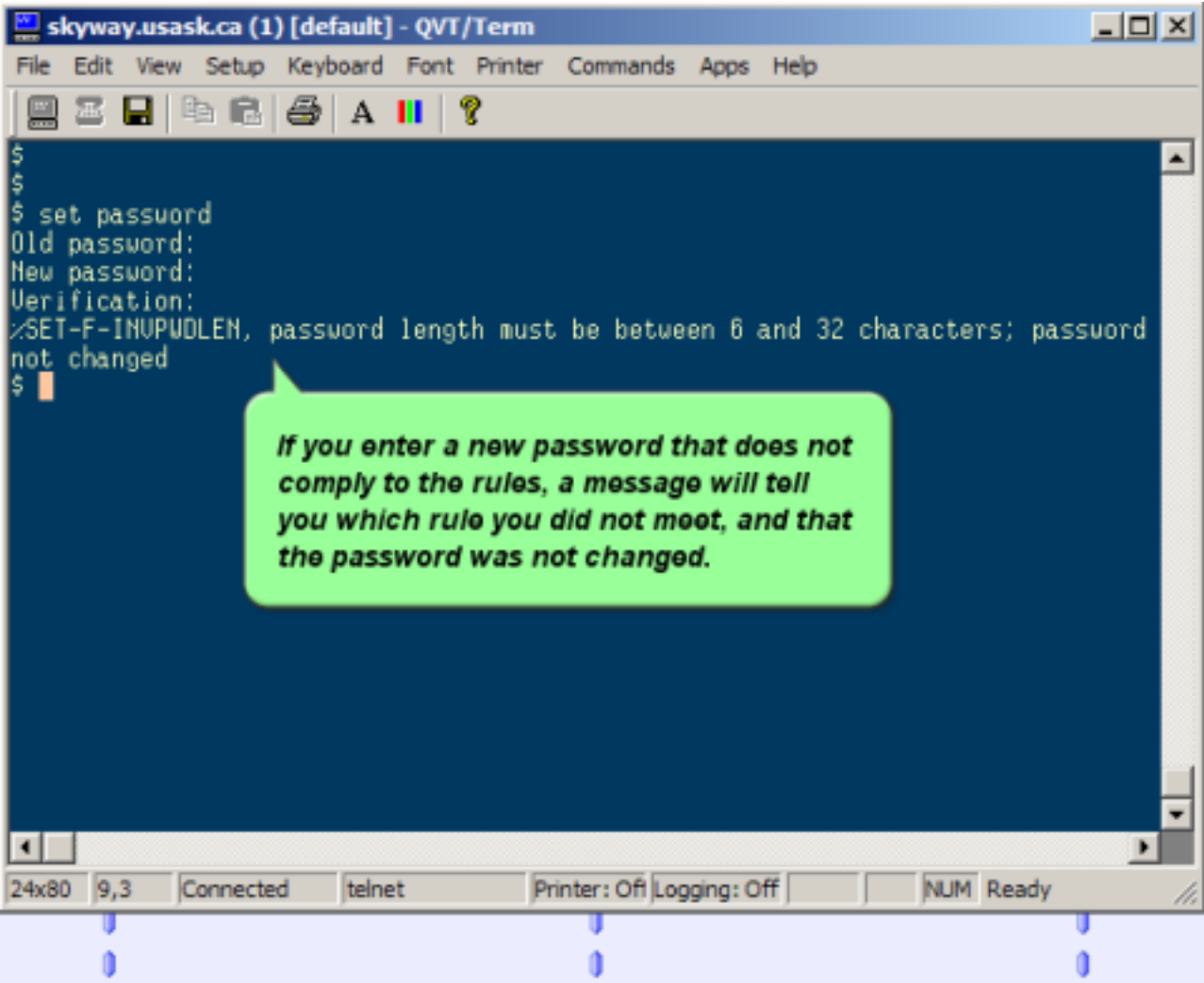












The screenshot shows a terminal window titled "skyway.usask.ca (1) [default] - QVT/Term". The terminal output is as follows:

```
$  
$  
$ set passuord  
Old password:  
New password:  
Verification:  
%SET-F-INUPDLEN, password length must be between 6 and 32 characters; password  
not changed  
$
```

A green callout box with a white border and a pointer to the error message contains the following text:

If you enter a new password that does not comply to the rules, a message will tell you which rule you did not meet, and that the password was not changed.

The terminal window has a menu bar with "File", "Edit", "View", "Setup", "Keyboard", "Font", "Printer", "Commands", "Apps", and "Help". Below the menu bar is a toolbar with icons for file operations and a help icon. The status bar at the bottom of the window displays "24x80", "9,3", "Connected", "telnet", "Printer: Off", "Logging: Off", "NUM", and "Ready".

skyway.usask.ca (1) [default] - QVT/Term

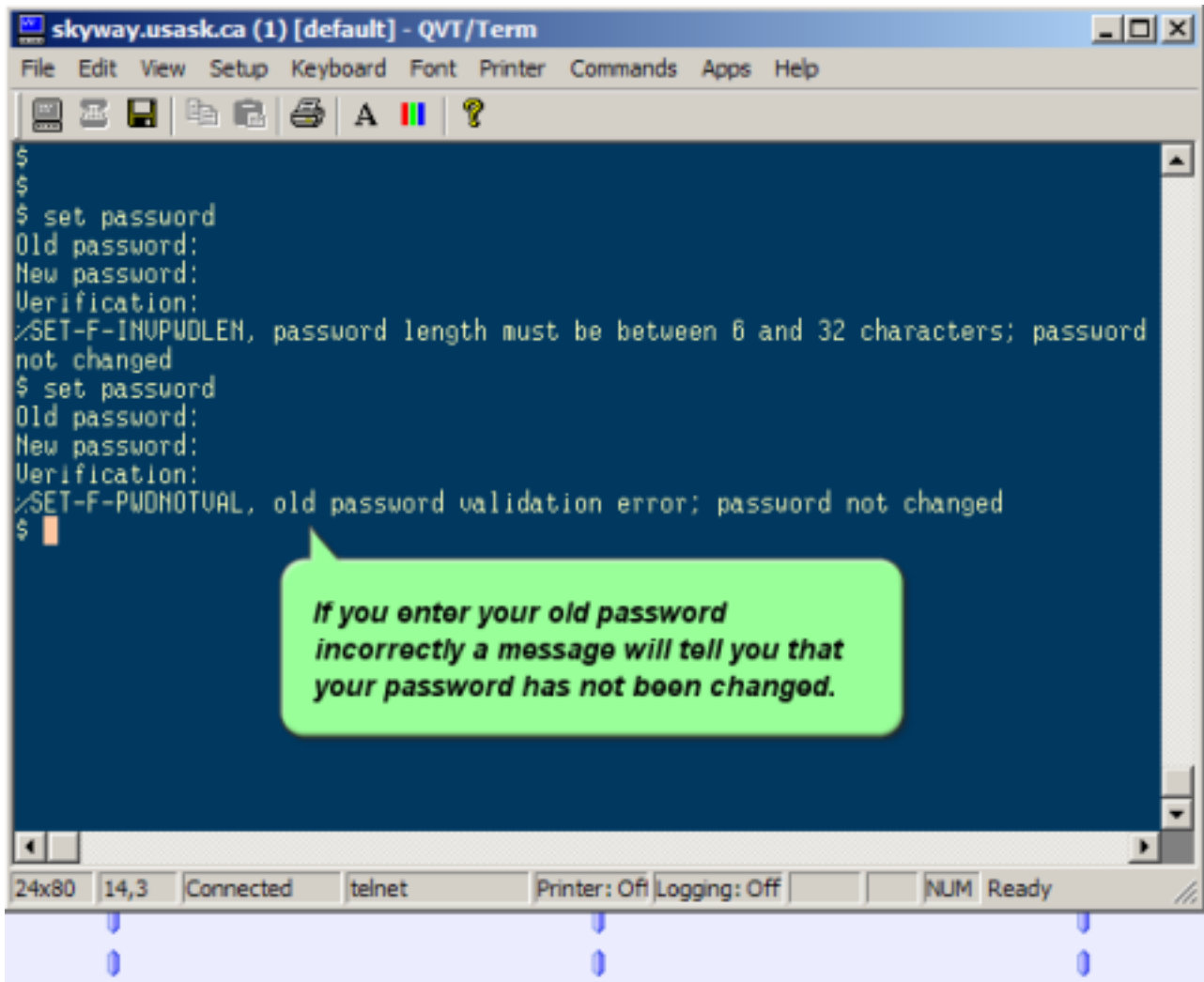
File Edit View Setup Keyboard Font Printer Commands Apps Help

☰ ☱ ☲ ☳ ☴ ☵ ☶ ☷ A 🇬🇧 ?

```
$  
$  
$ set passuord  
Old password:  
New password:  
Verification:  
%SET-F-INUPDLEN, password length must be between 6 and 32 characters; password  
not changed  
$ █  
$
```

If you do not successfully change your password you will have to start the process over again, including typing the set password command.

24x80 9,3 Connected telnet Printer: Off Logging: Off NUM Ready



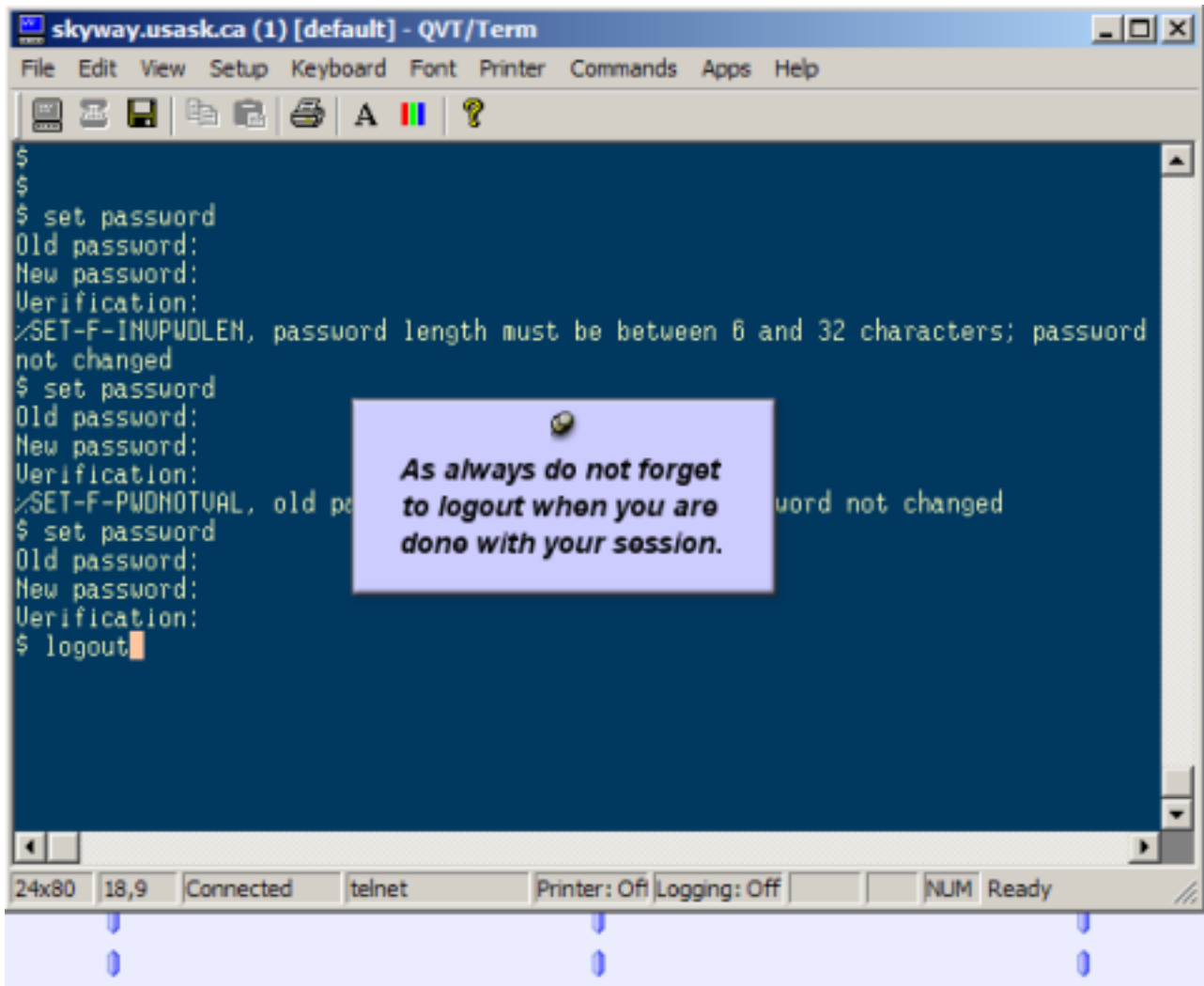
```
skyway.usask.ca (1) [default] - QVT/Term
File Edit View Setup Keyboard Font Printer Commands Apps Help
[Icons]
$
$
$ set passwd
Old password:
New password:
Verification:
/SET-F-INUPDLEN, password length must be between 6 and 32 characters; password
not changed
$ set passwd
Old password:
New password:
Verification:
/SET-F-PWDNOTUAL, old password validation error; password not changed
$ set passwd
```

Each time the password is not changed, the process begins at the set password command.

```
skyway.usask.ca (1) [default] - QVT/Term
File Edit View Setup Keyboard Font Printer Commands Apps Help
[Icons]
$
$
$ set passuord
Old password:
New password:
Verification:
%SET-F-INUPWOLEN, password length must be between 6 and 32 characters; passuord
not changed
$ set passuord
Old password:
New password:
Verification:
%SET-F-PWDNOTVAL, old password validation error; password not changed
$ set passuord
Old password:
New password:
Verification:
$ █
$ █
```

A successful password change will not display a message, but the regular command prompt will be displayed.

24x80 18,3 Connected telnet Printer: Off Logging: Off NUM Ready



Password Change Resources

The VMS help system has a variety of help pages available if you want more information about password changes. The following are some of the commands to get more information.

- * help set password
- * help set password example (shows an example and discusses changing a password)
- * help set password /generate (for info on how to generate a list of acceptable passwords to choose from)

Password Change Resources

- * If you would like more tips on securing your password, review the Password Tips tutorial.**
- * The Password Tips tutorial can be accessed through a link on the mainframe tutorials page.**



Training Services

Information Technology Services | University of Saskatchewan

**Thank you for
viewing our tutorial**