



Training Services

Information Technology Services | University of Saskatchewan

Mainframe Computing Basics

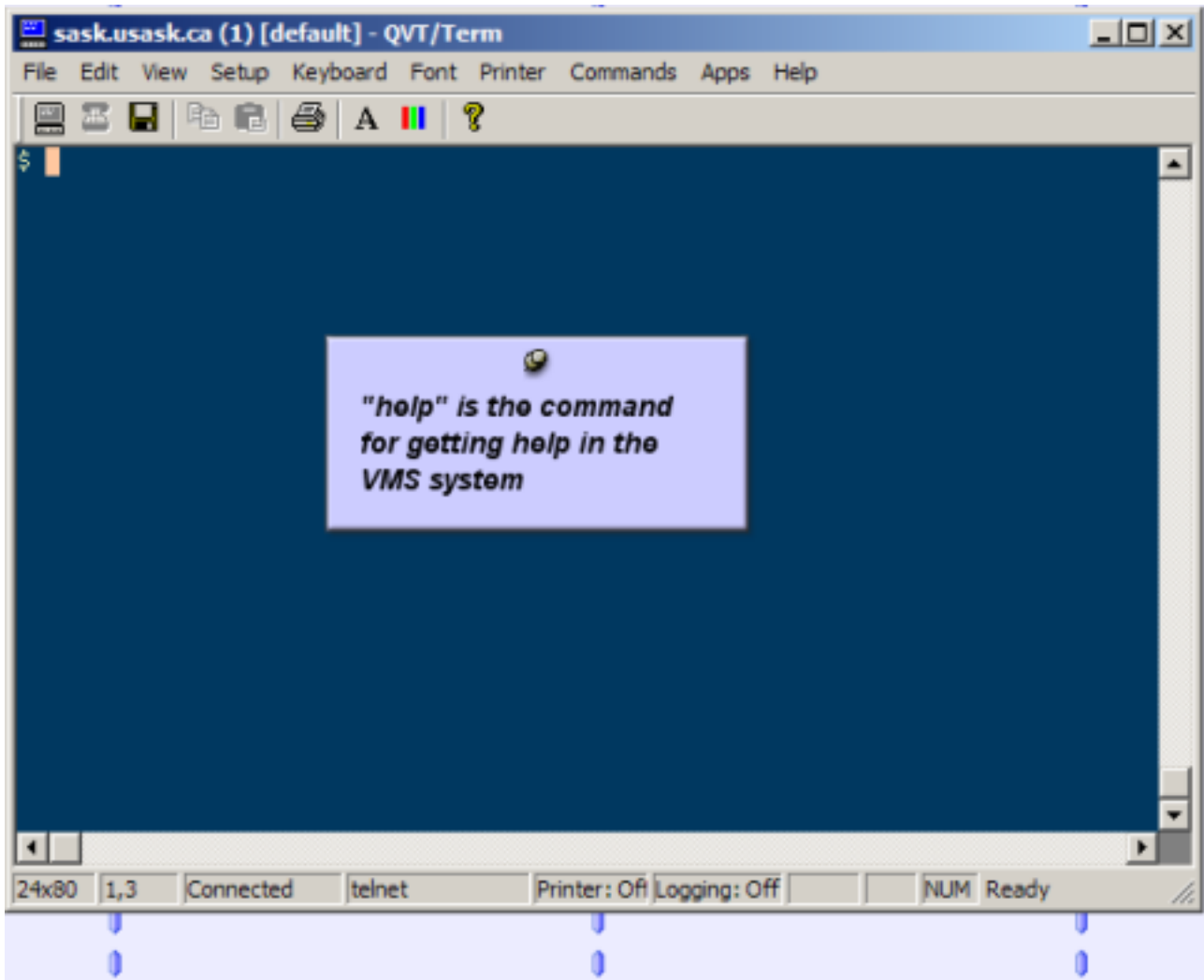
Using the Help System

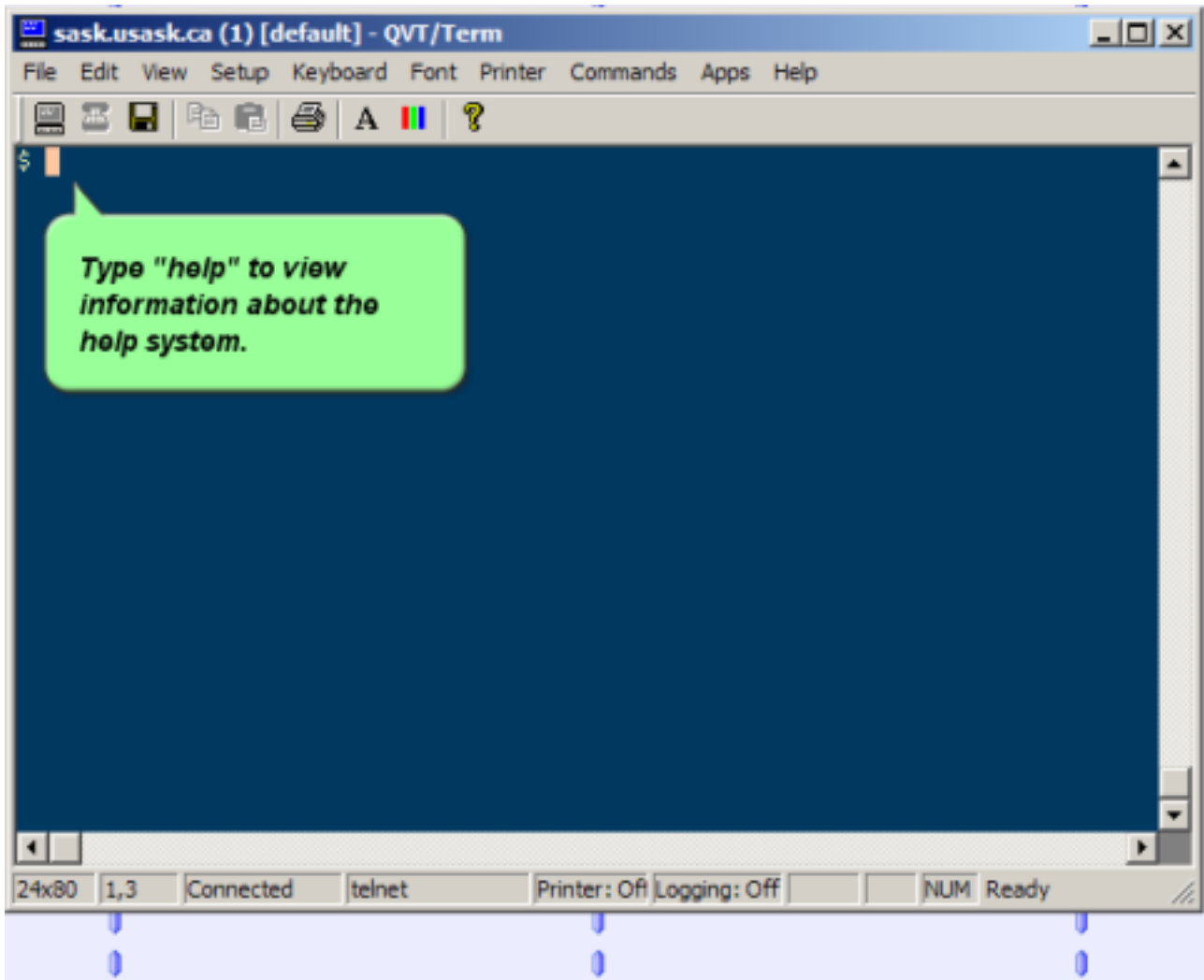
VMS Version

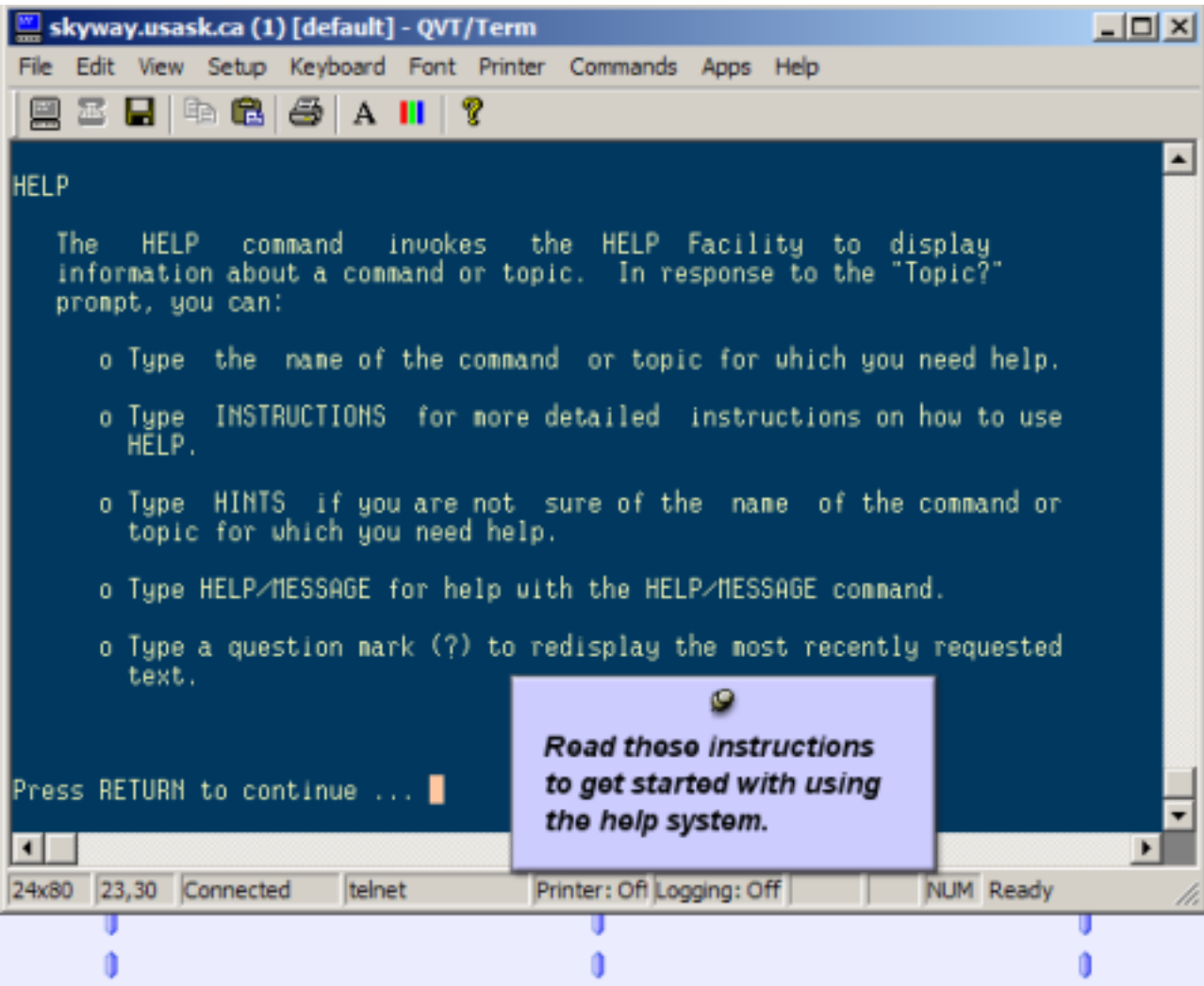
***If do not know how to connect to a VMS mainframe using telnet you may want to review the Getting Started tutorial before reviewing this tutorial.**

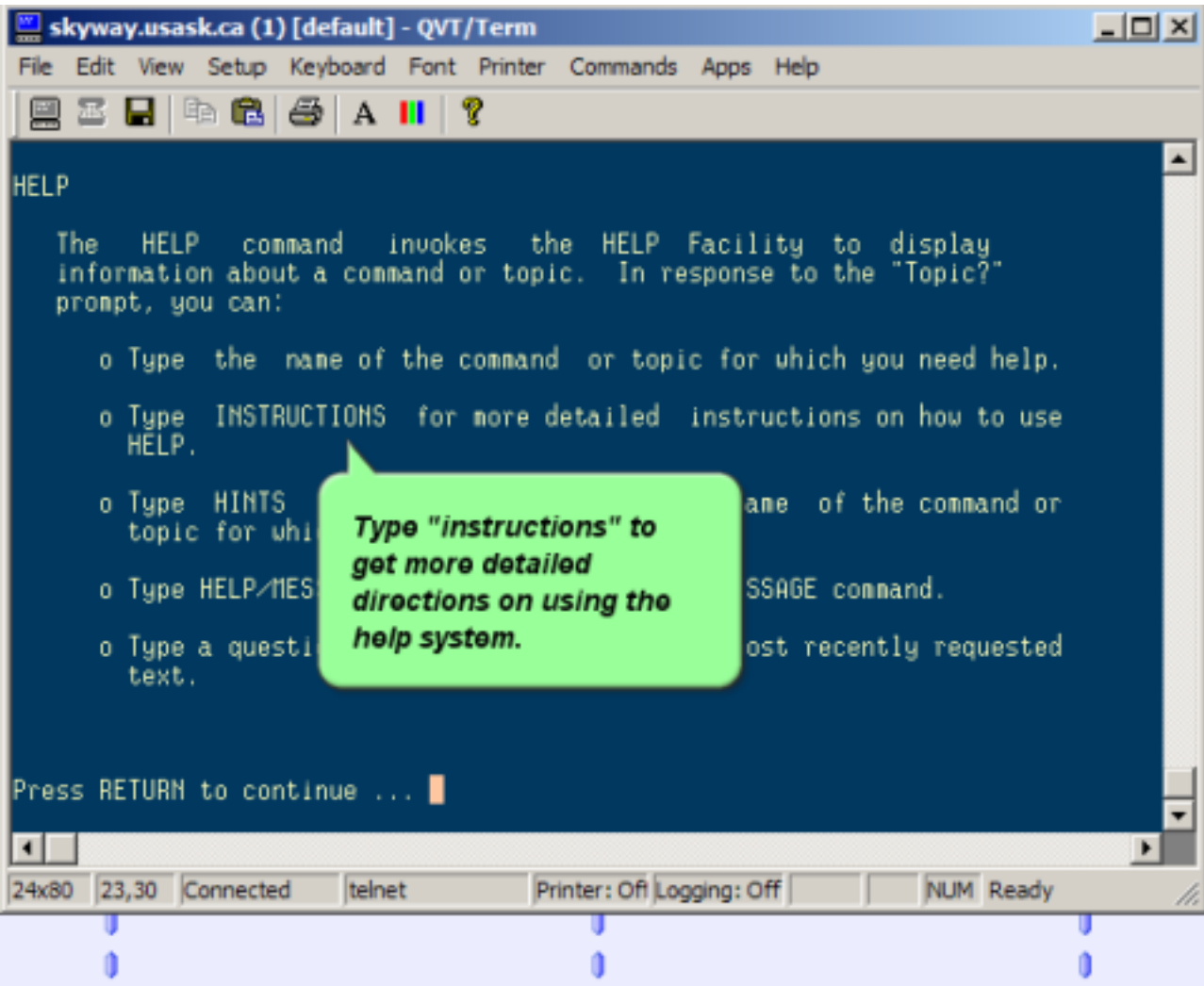
How do I get help using VMS?

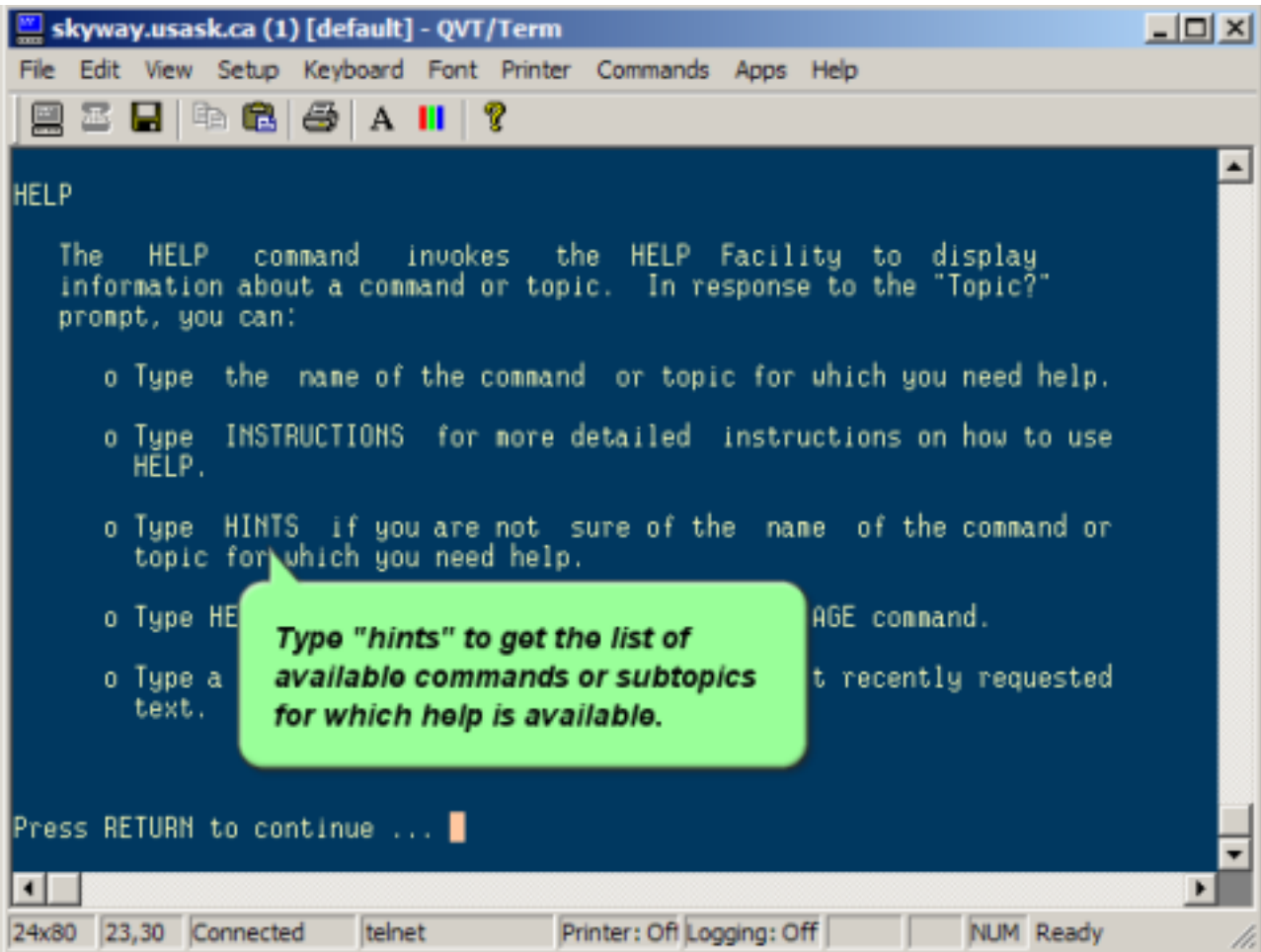
- * VMS has a built in help system.
- * The command for accessing the help system is **"help"**.
- * Remember VMS commands are not case sensitive.
- * The VMS help system takes time to get used to, but the following tutorial will try to point out some main points that will make the help system easier to get used to.

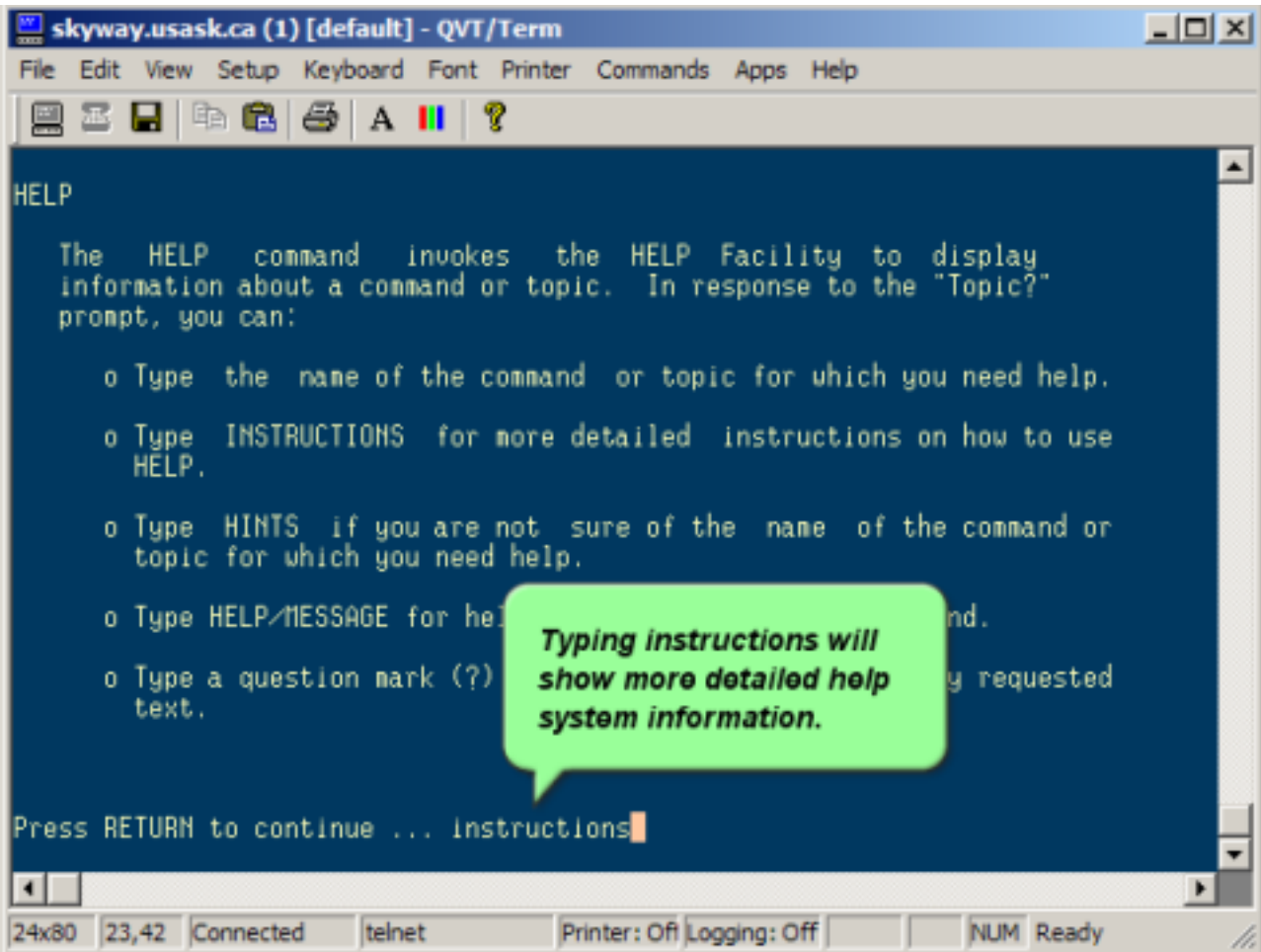


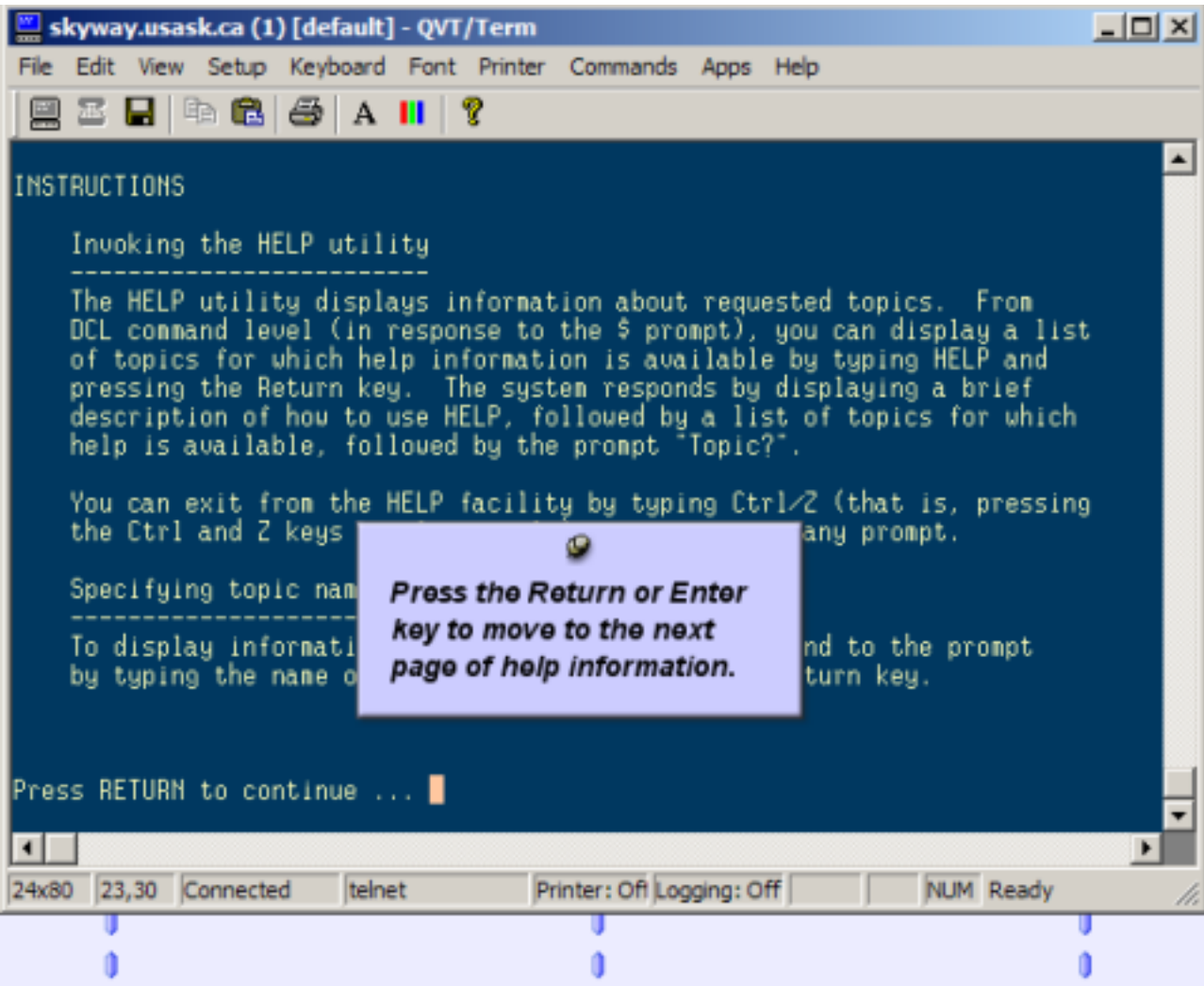


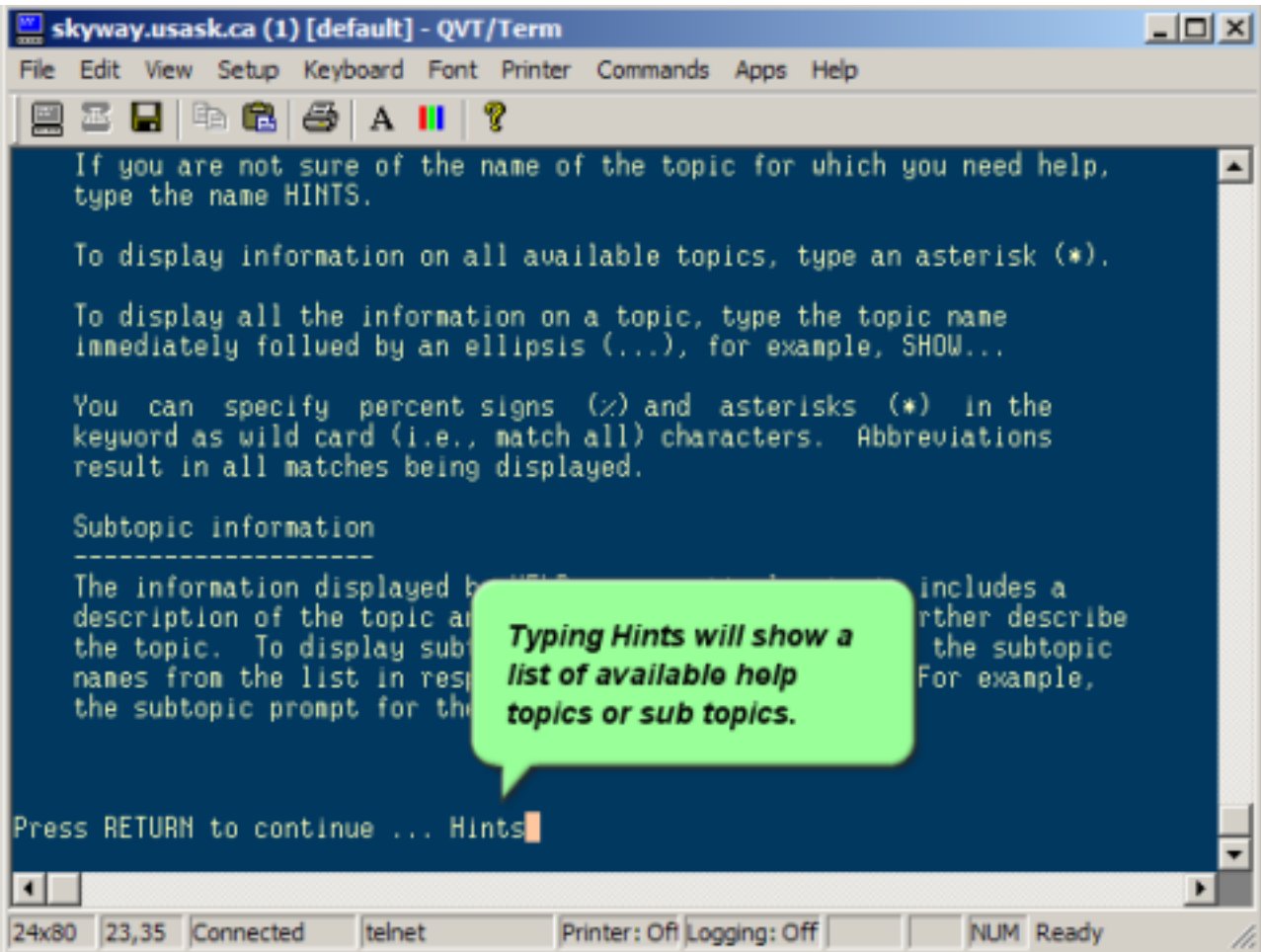


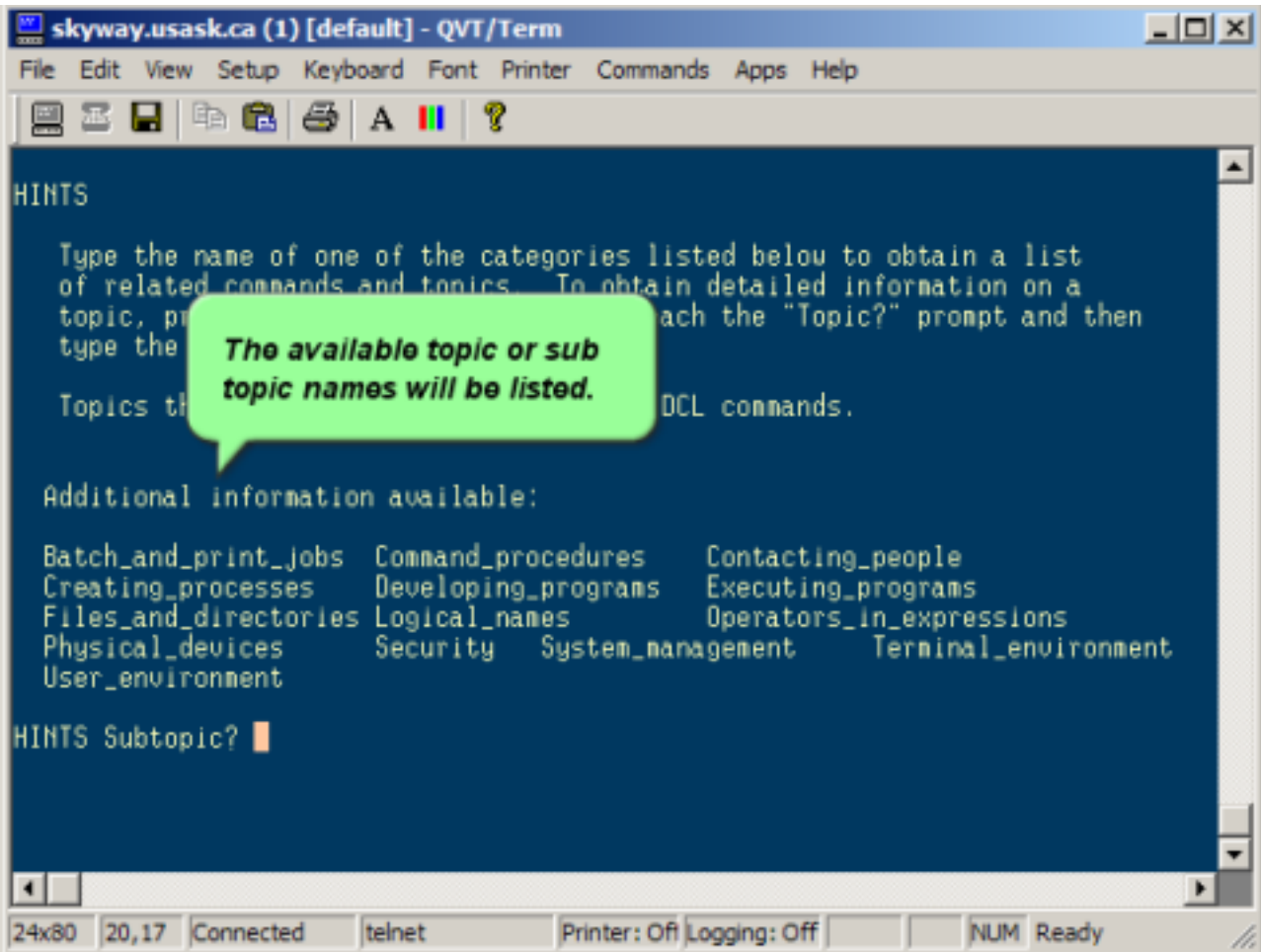


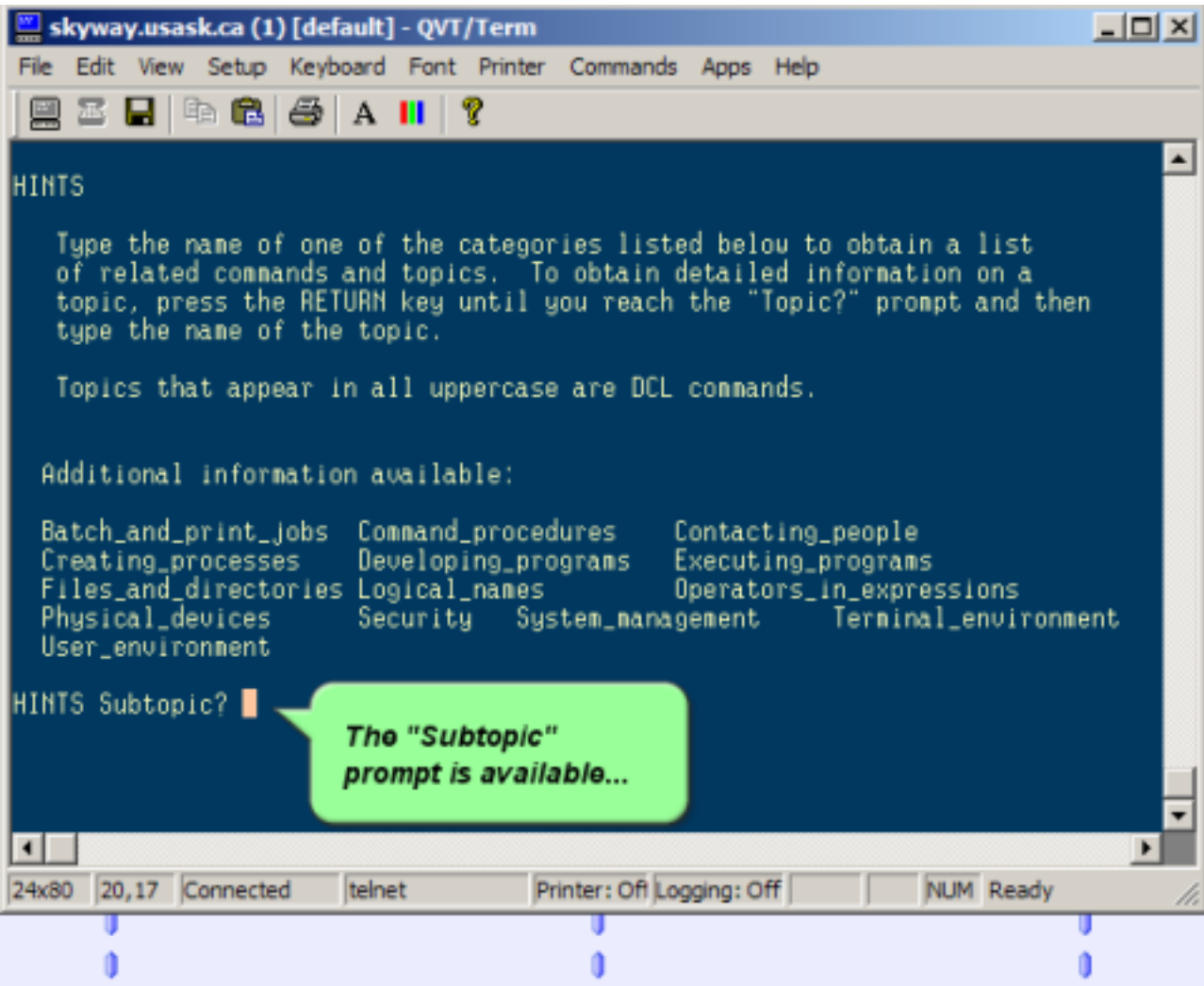


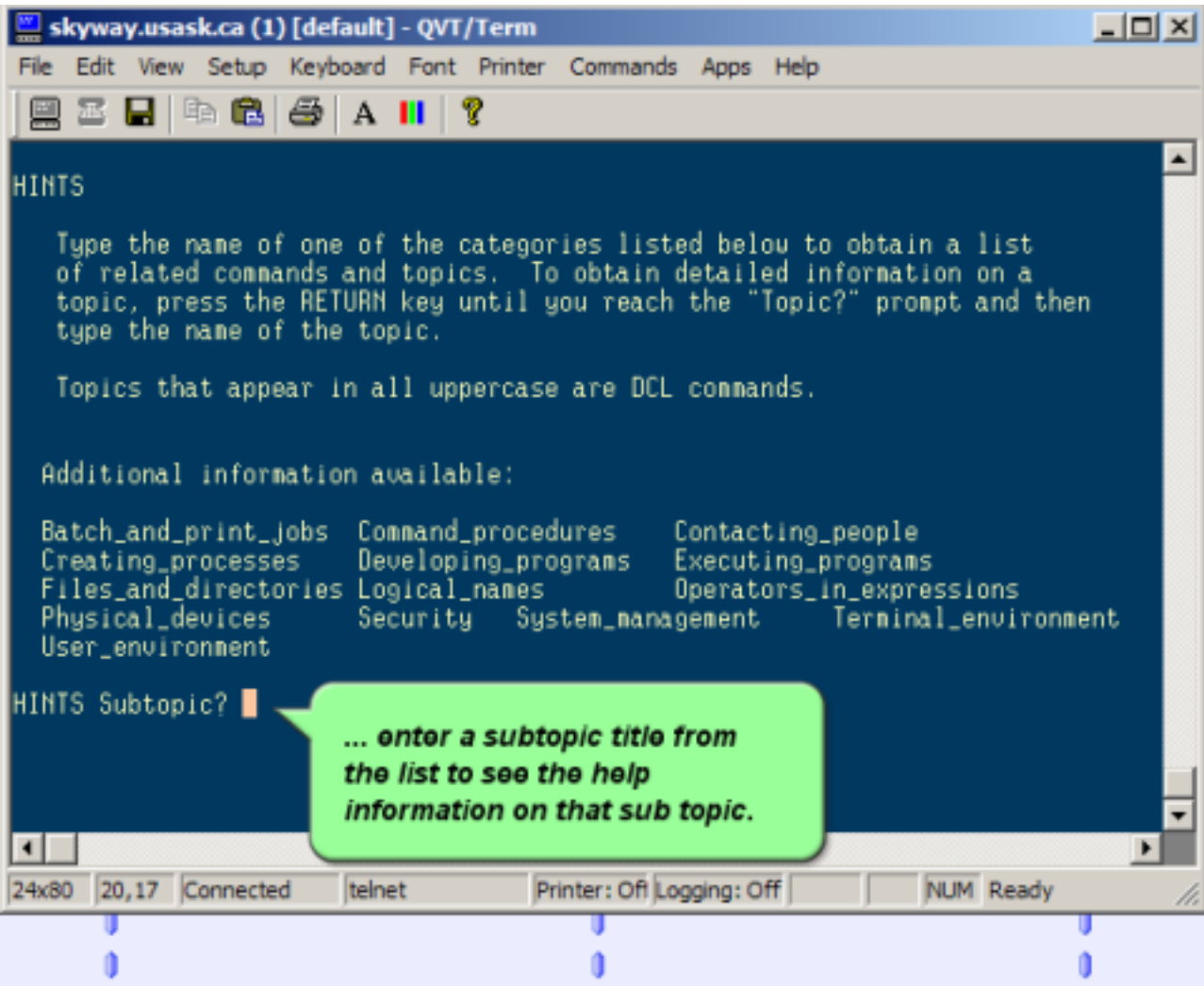


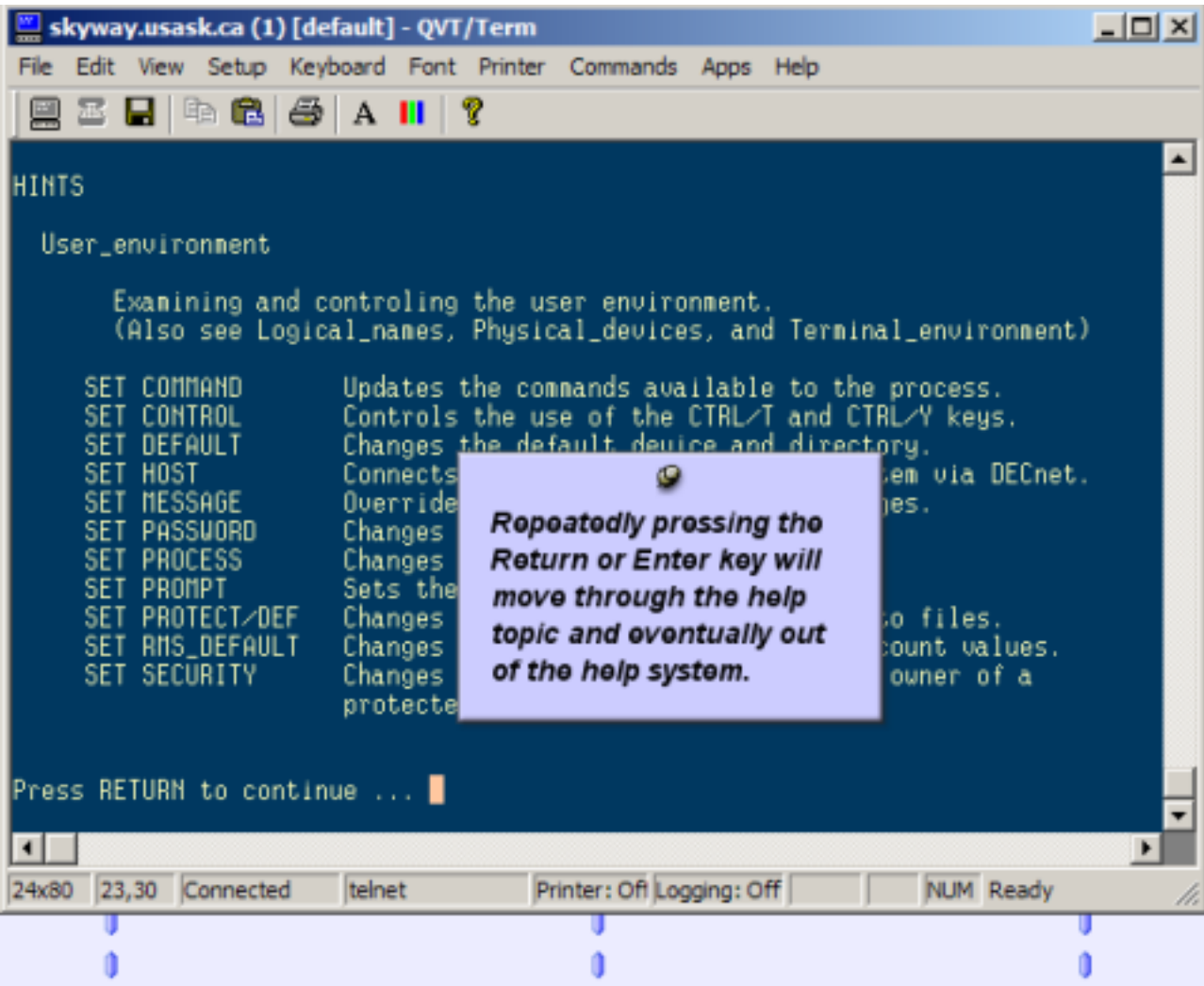


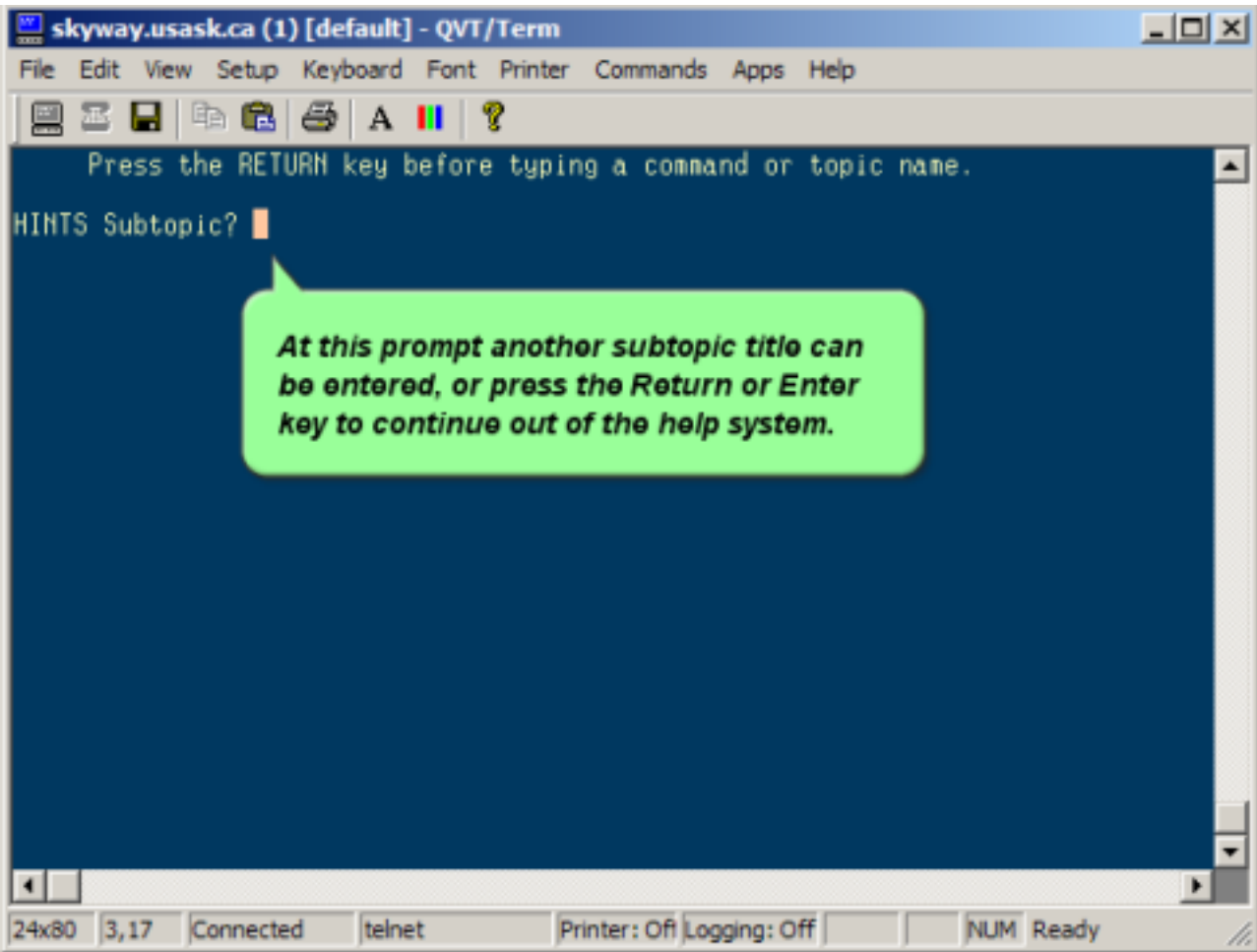


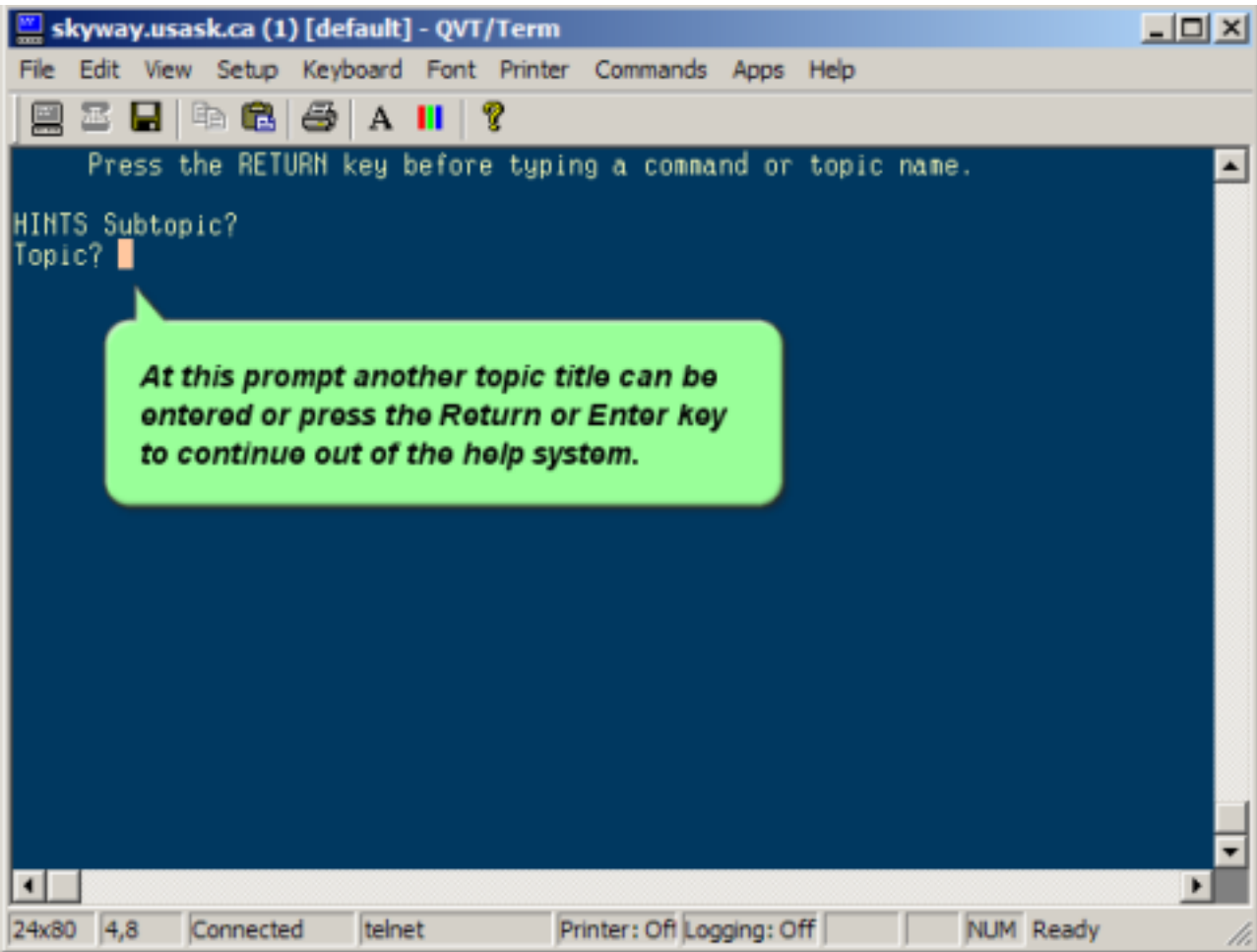


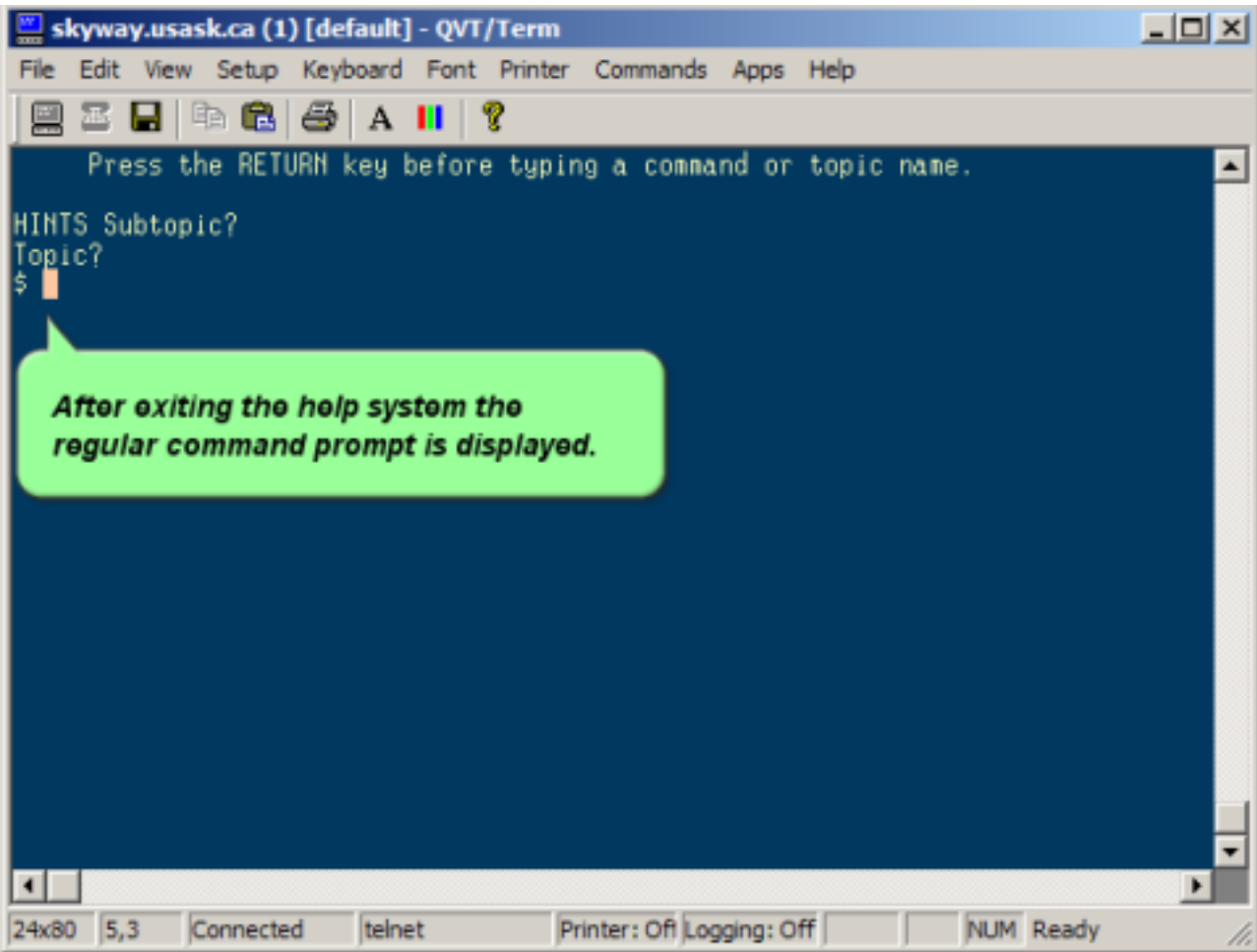


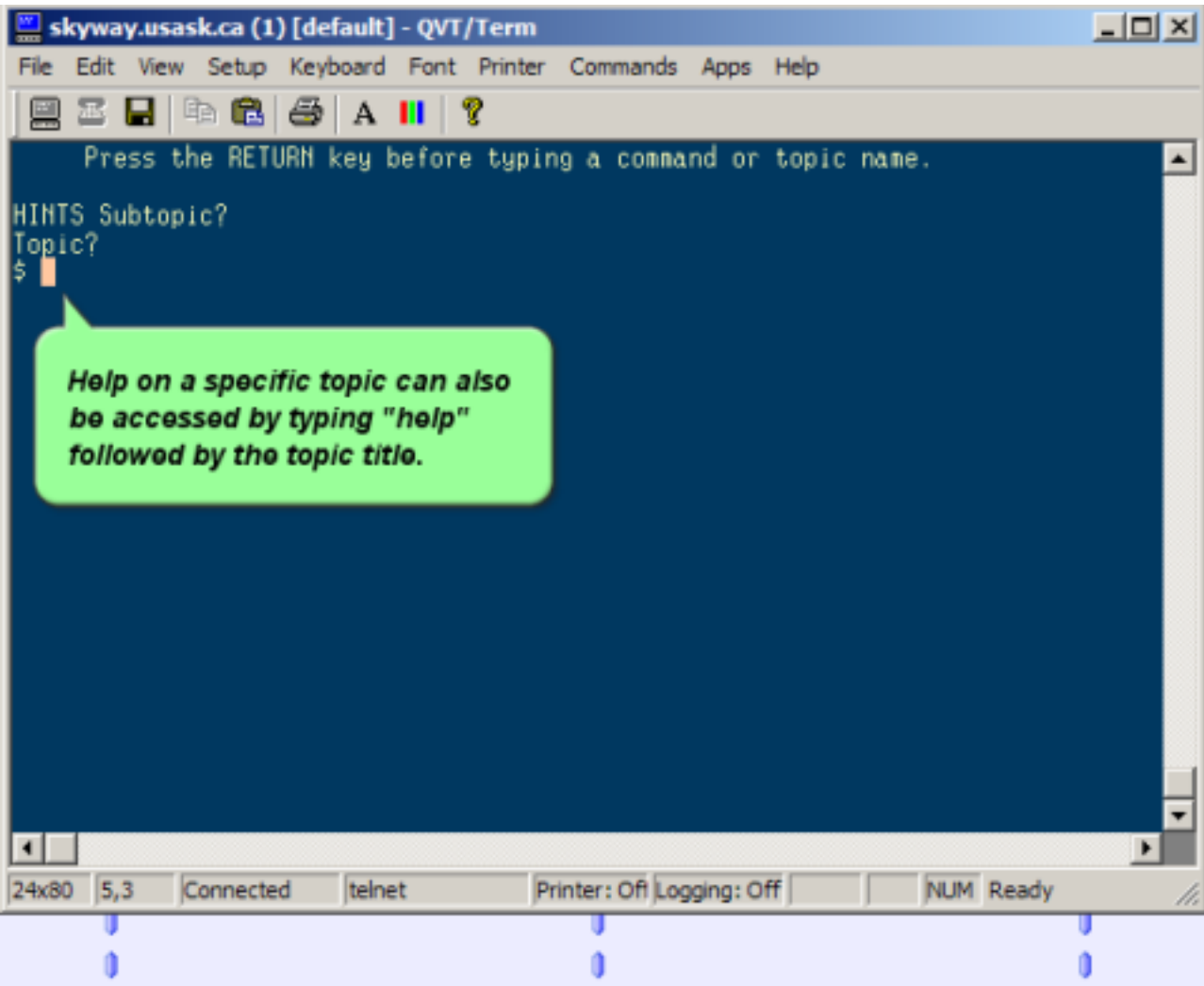


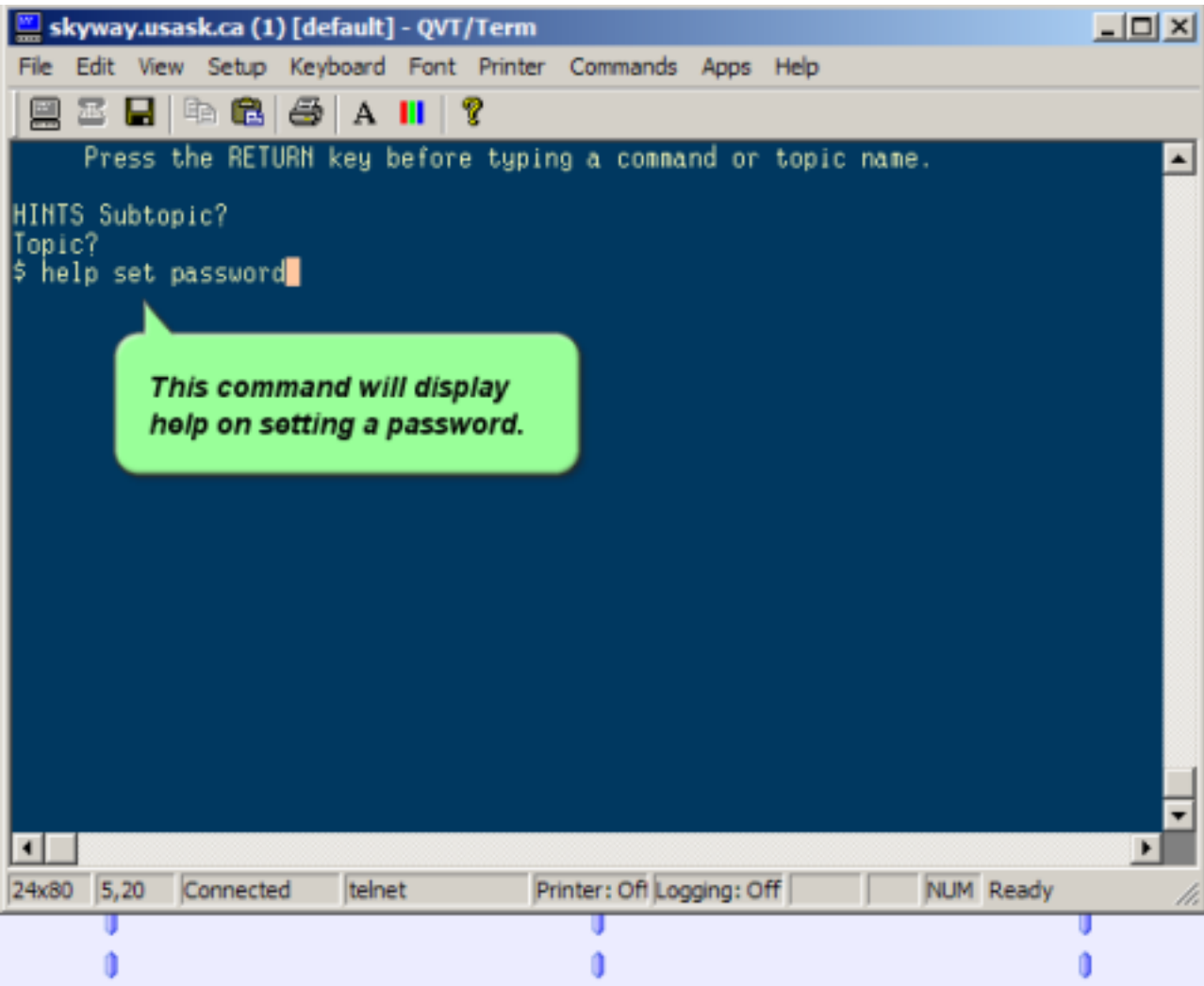


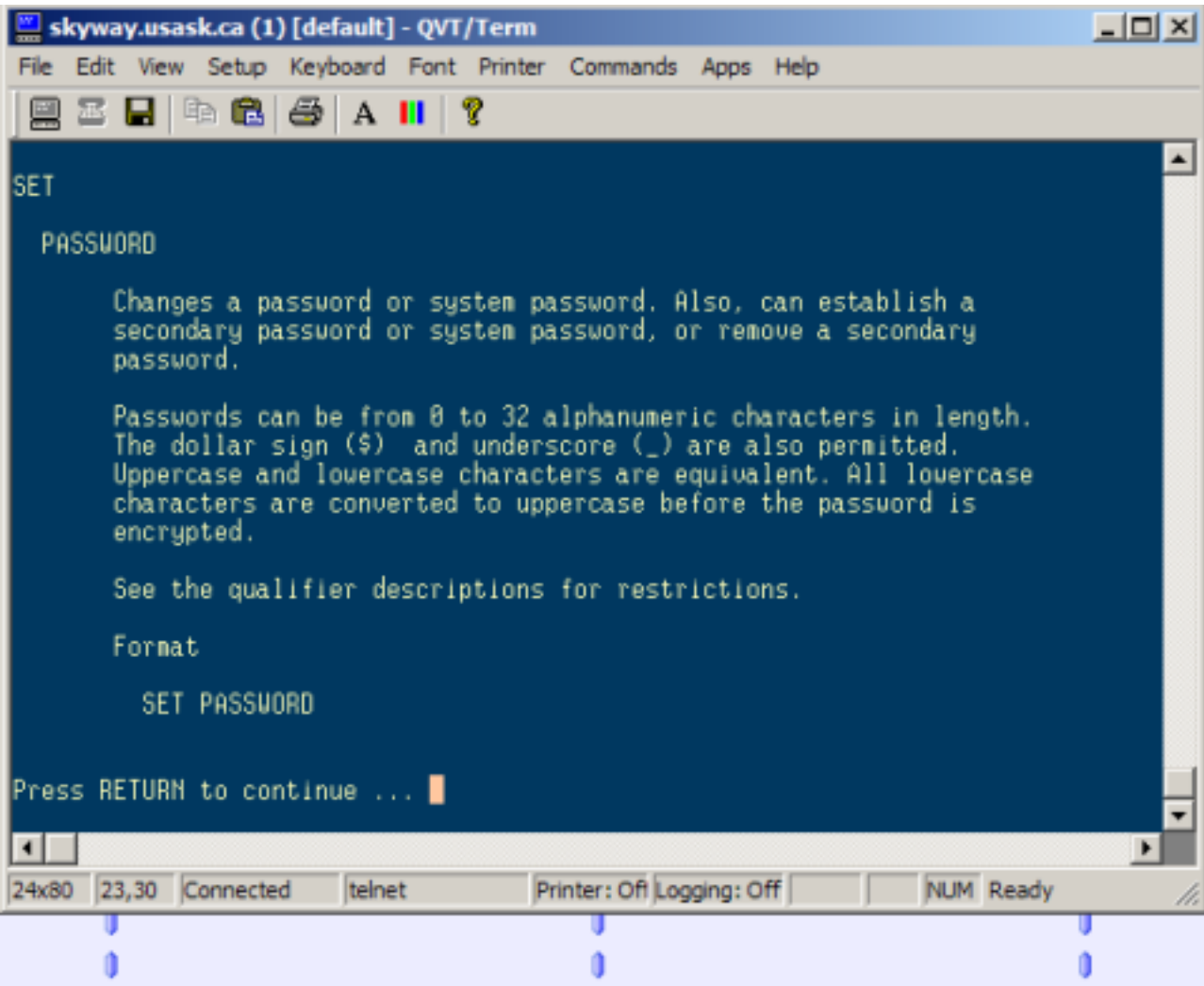


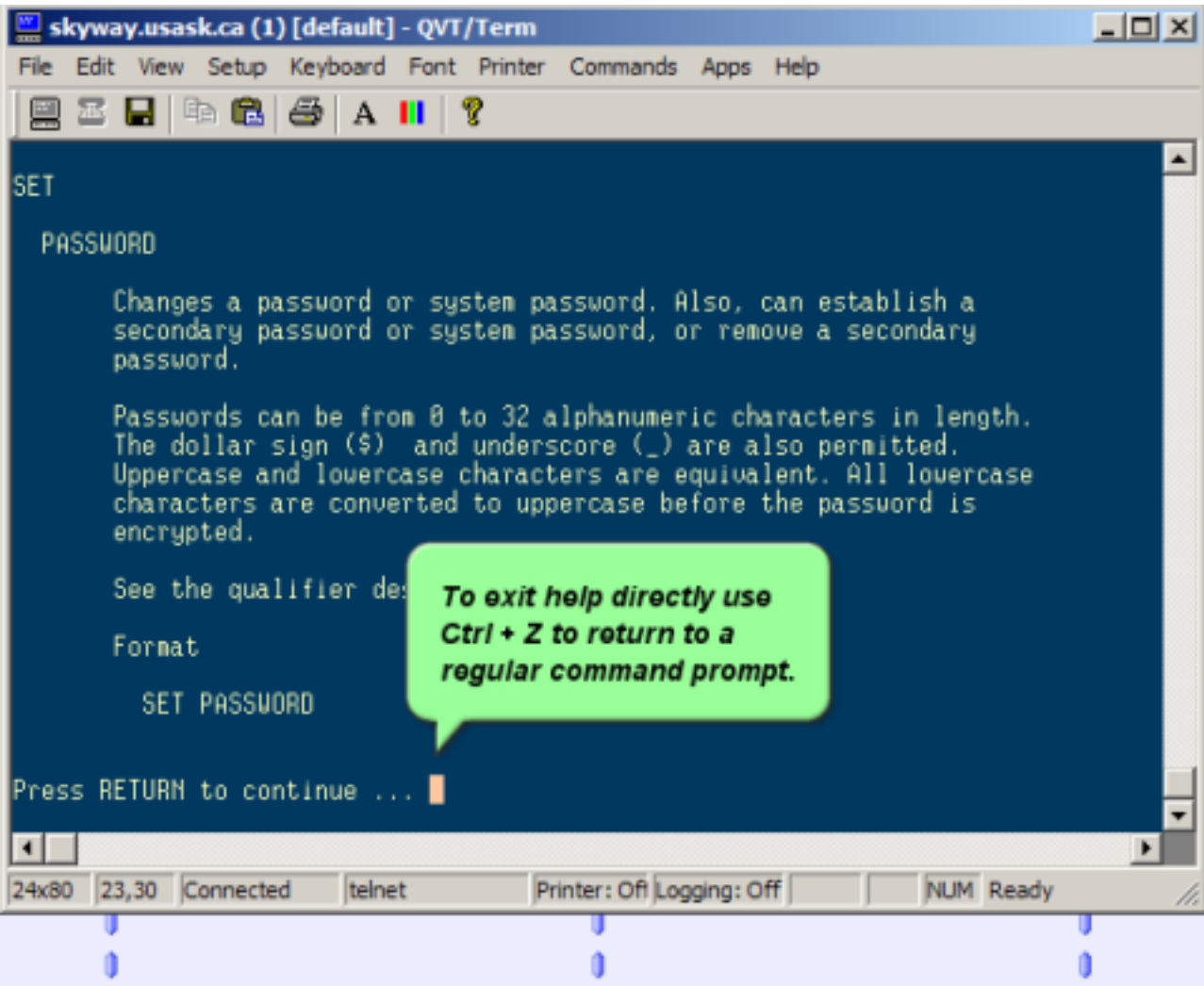


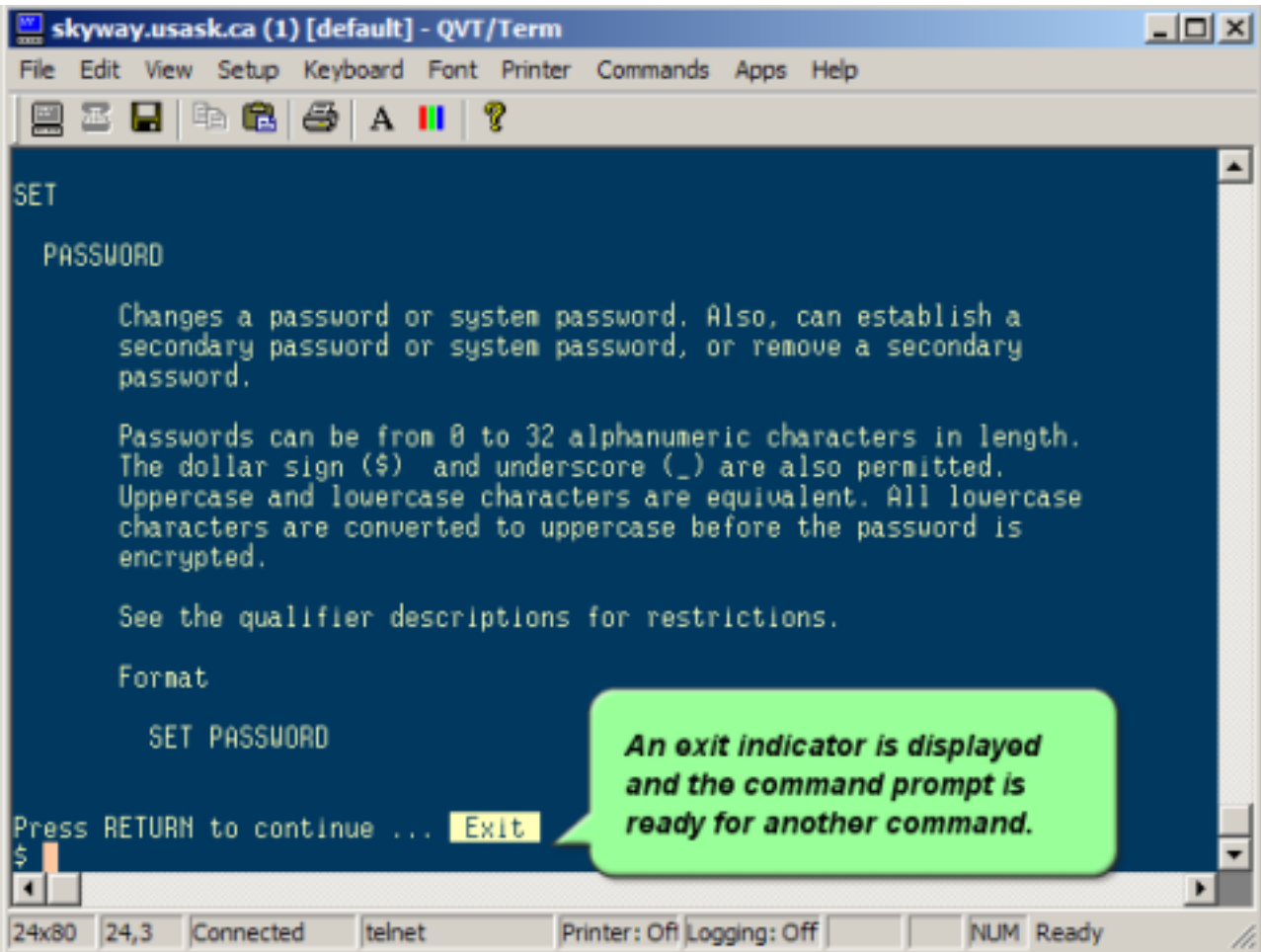


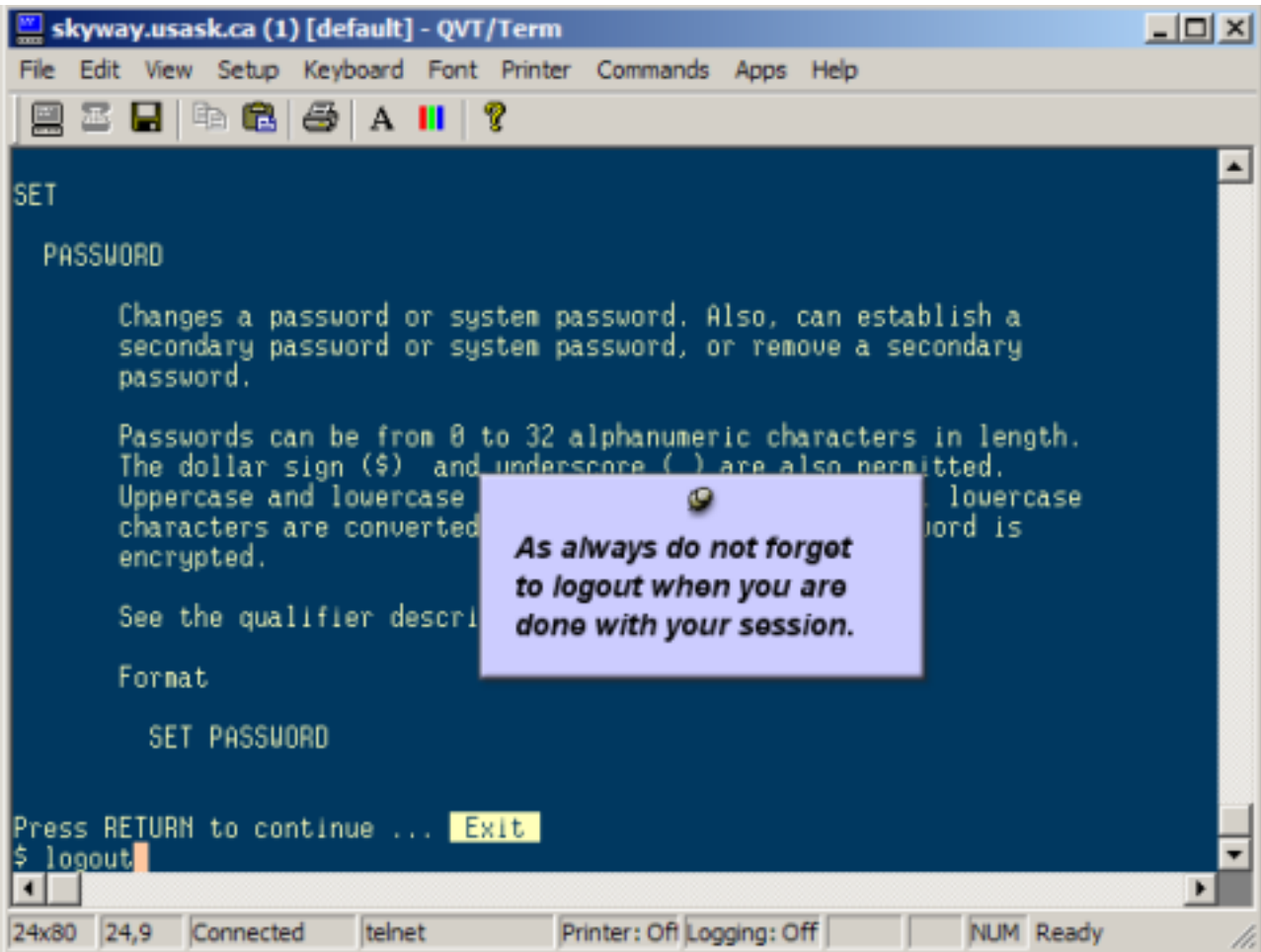




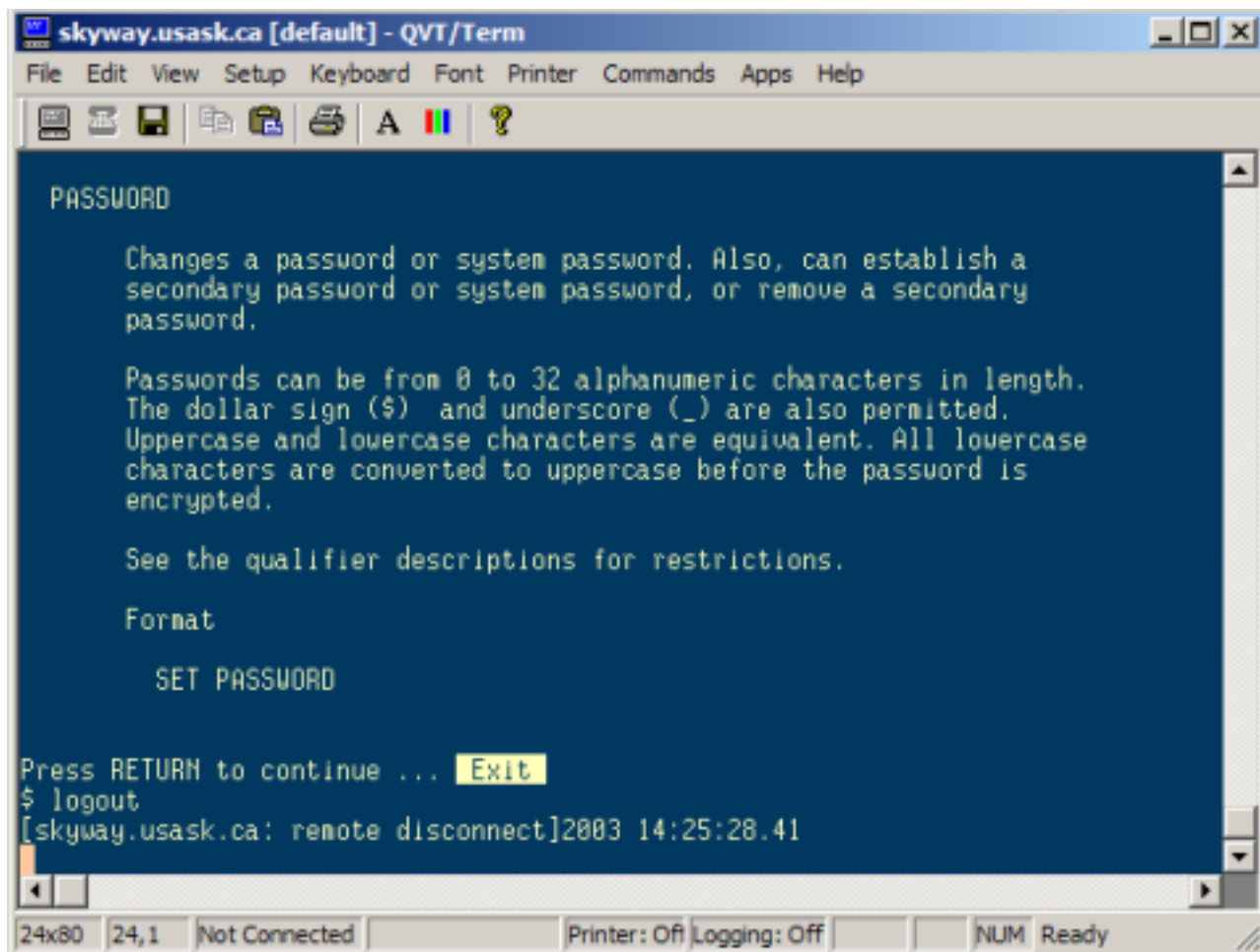








***As always do not forget
to logout when you are
done with your session.***



VMS Help System

- * This tutorial demonstrated how to use the VMS help system.
- * The other mainframe tutorials demonstrate other common mainframe commands.



Training Services

Information Technology Services | University of Saskatchewan

**Thank you for
viewing our tutorial**